

USG BORAL DEFLECTION TRACK - T SHAPE

PRODUCT CATEGORIES: WALL TRACK

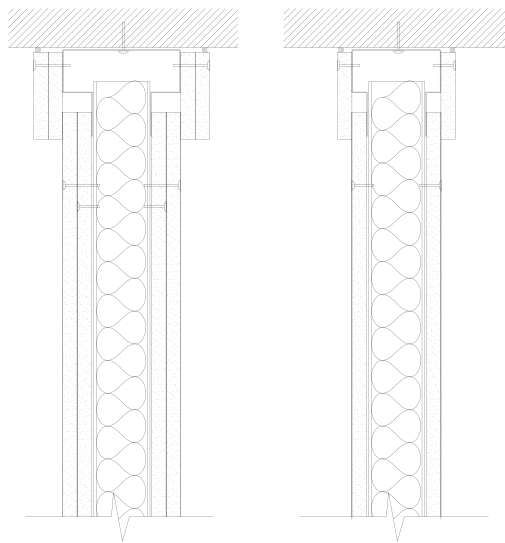
- Used in Fire Rated wall assemblies allowing for vertical deflection of floor beams or floor decks above the interior partitions
- Custom made Flange depth varying from 60 to 100 mm is suitable for vertical deflection movement exceeding 30 mm
- Used for a wall height that is above 3.5m
- Used to achieve 1, 2 and 3 hours fire rated in wall assemblies

MATERIAL PROPERTIES

Yield stress, Fy 41 ksi Ultimate, with G90 Zinc coating

GEOMETRIC PROPERTIES

Designed Thickness	from 0.90 to 1.6 mm	Flange Depth	60, 75, 90 and 100 mm
		Web Depth	64, 92, 100 & 150 mm
		Deflection Groove	16 & 32 mm



ASTM & CODE STANDARDS

- USG Boral Deep Deflection Tracks double sided - Narrow and wide are produced to meet or exceed ASTM C645 and C955
- Galvanized sheet steel meets or exceeds requirements of ASTM A-653
- For installation & storage information refer to ASTM C1007 & C754

GREEN BENEFITS AND RECYCLED CONTENT

LEED Credit MR 2 - USG Boral products are manufactured from cold-formed steel. Steel is 100% recyclable, which helps divert debris from the waste stream.

LEED Credit MR 4 - USG Boral steel products have a minimum of 25.5% post-consumer recycled content, and 6.8% pre-consumer.