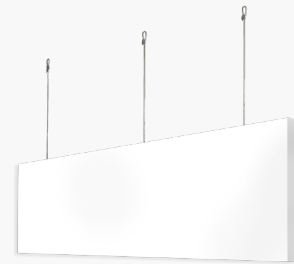


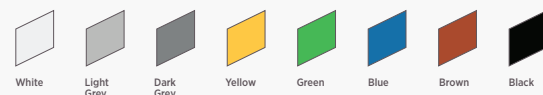
# SOFT FIBER LOUNA™ BAFFLE



## LOUNA™ BAFFLE DRAWINGS



## AVAILABLE COLOR



## FEATURES AND BENEFITS

- An elegant acoustic solution made from soft fiber for any space
- Creates spacing in ceiling designs.
- Louna™ Baffle is a vertical hanging acoustic board with encapsulated edges.
- Improved acoustic properties at exposed workplaces with NRC values of up to 0.70 (depending on baffle spacing from each other).
- Can accommodate existing elements such as lighting and air conditioning.
- Certificated for Environmental Product Declaration (EPD) as per ISO 14025.
- Allows chilled beams or thermal mass heating to function as intended.
- Available in custom sizes and colors upon request.

## APPLICATIONS

- Hotels
- Leisure centers
- Restaurants and cafes
- Open-plan areas
- Transportation (airports, bus terminals and train stations)
- Convention halls and concourses

## SOUND ABSORPTION

Frequency, Hz	125	250	500	1000	2000	4000	NRC*
1800x300x40mm	0.20	0.30	0.65	0.90	0.85	0.80	0.70

\* Calculated to ASTM C 423-01



## SUSPENSION SYSTEM

It consists of a stainless-steel String dropping from the soffit and a Spiral Anchor (Spring) that is fixed on the tiles through helicoidal rotation. The String is adjustable to suit different plenum heights. The Spring is designed to safely hold the tile weight of a floated ceiling.

### Materials Classification

Stainless Steel 1.5mm wire diameter with breaking force of 2.10 KN.

### Product Specs

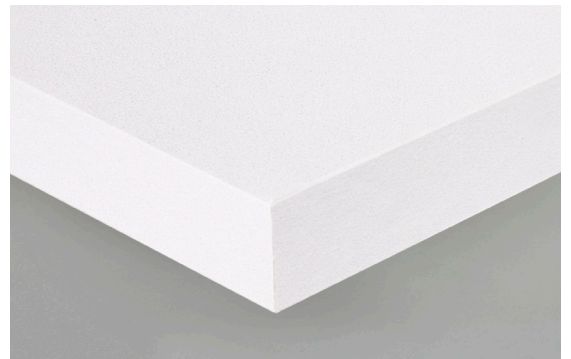
Suspension Rope with Cable Gripper & Hook dia 1.5mm.

### Spiral Anchor

dia 22mm.

### ASTM & Code Standards

Stainless Steel Wire: ASTM A 580/A 580M, Type 304, nonmagnetic. Design load requirements as per ASTM C635.

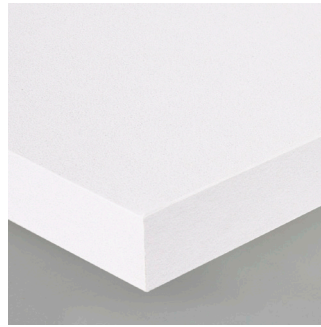


Louna™ Baffle Edge





# SYSTEM COMPONENTS



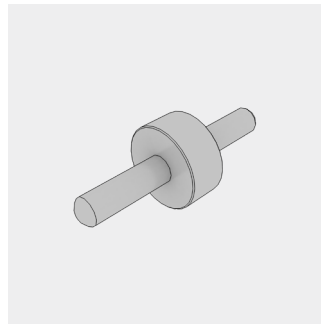
**Baffle Panel**



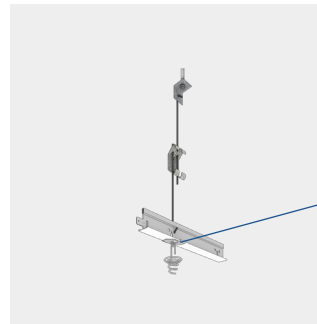
**Baffle Spiral Hook dia 22mm**



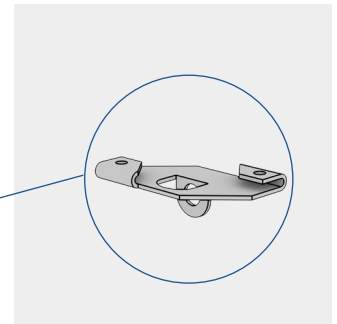
**Cable Gripper with Hook and Wire Rope 1.5mm**



**Connecting Guiding Pin (optional)**



**(Option 2) Donn® Grid Suspension System**



**Main T Clip 25mm**

# SYSTEM SPECIFICATION

Louna™ Baffle Ceiling meets the specifications in accordance with ASTM E1264.

**Materials Classification**

Type A, Form A2.3, Pattern G

**Substrate and Surface Finish**

Soft fiber substrate laminated with pre-painted fiberglass scrim and back fiberglass tissue

**Thickness**

40mm, 50mm

**Size**

200x600mm, 200x1200mm  
200x1800mm, 200x2400mm,  
300x600mm, 300x1200mm,  
300x1800mm, 300x2400mm,  
600x600mm, 600x1200mm,  
600x1800mm, 600x2400mm

**Edge Detail Trim**

Square blade

**Density**

140-150 kg/m³

**Noise Reduction Coefficient**

**[NRC]**

up to 0.70 depending on baffle thickness and spacing

**Light Reflectance Coefficient**

**[LR]**

0.88

**VOC Class**

Greenguard & Greenguard Gold

**Fixing**

Steel String dropping from the soffit and a Spiral Anchor (Spring) that is fixed on the baffle through helicoidal rotation. The String is adjustable to suit different plenum heights. The Spring is designed to safely hold the tile weight of a floated ceiling.

**Mold Prevention Application as per ASTM D3273**

Rate 10: Resistant to mold growth

**Color**

White, other RAL colors are available on request

**Surface Burning Characteristics as per ASTM E84**

Class A

**EN 13501-1 Class of Reaction to Fire Performance**

A1

**Thermal Conductivity**

$\lambda = 0.036 \text{ W/m}^2\text{K}$

**Washability / Scrubbability as per ASTM D4828 & D2486**

Exceeds 1000 Wash/Scrub cycles without surface break or the extent of abrasion upon request

**Relevant LEED® Credit**

EA Credit 1 | MR Credit 4 | MR Credit 5 | MR Credit 6 | IEQ Credit 3 | IEQ Credit 3.2 | IEQ Credit 4.6 | IEQ Credit 8.1 | IE Credit 9

**Maintenance**

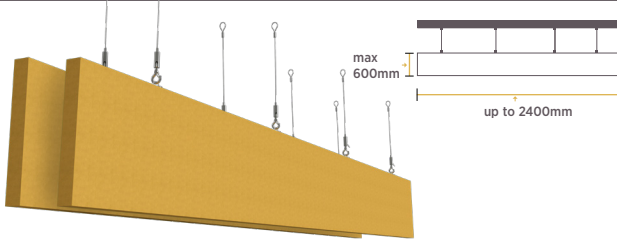
Can be cleaned easily with a soft brush or vacuum. To clean panel, use a clean, white cloth with warm water and wipe surface.

**Additional Information**

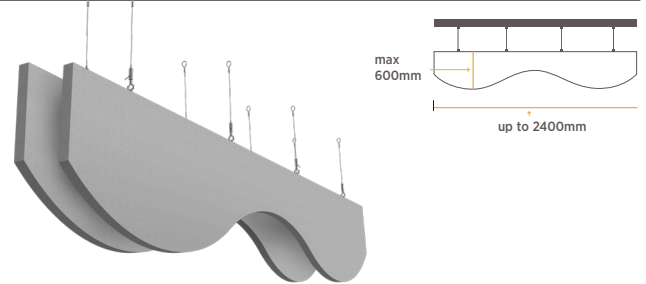
- USG Middle East's Louna™ Baffles are flat. However, they will exhibit an inherent deflection, which may be more apparent as the proximity to adjacent surfaces is reduced. This deflection should be no more than 5mm. Local environmental conditions may increase this variance.
- Take care to minimize movement due to airflow within a space.
- Custom sizes rather than the system configuration table. Shape and color options are available upon request. Consult USG Middle East technical team.

## SYSTEMS CONFIGURATIONS\*

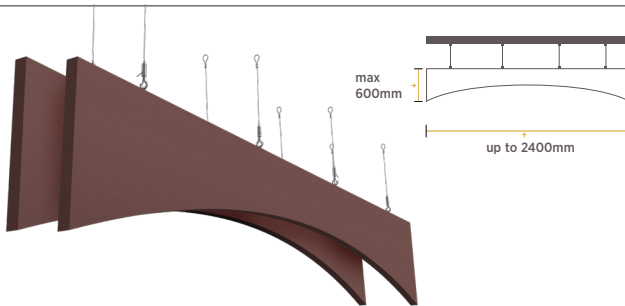
**Straight**



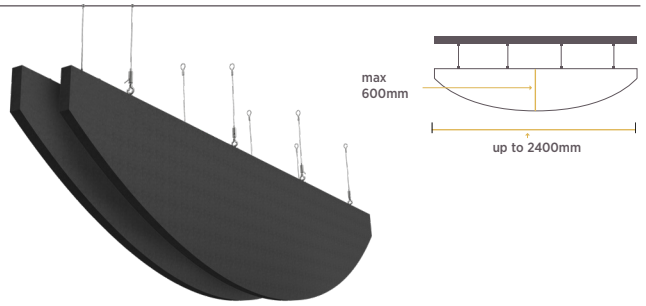
**Wavy**



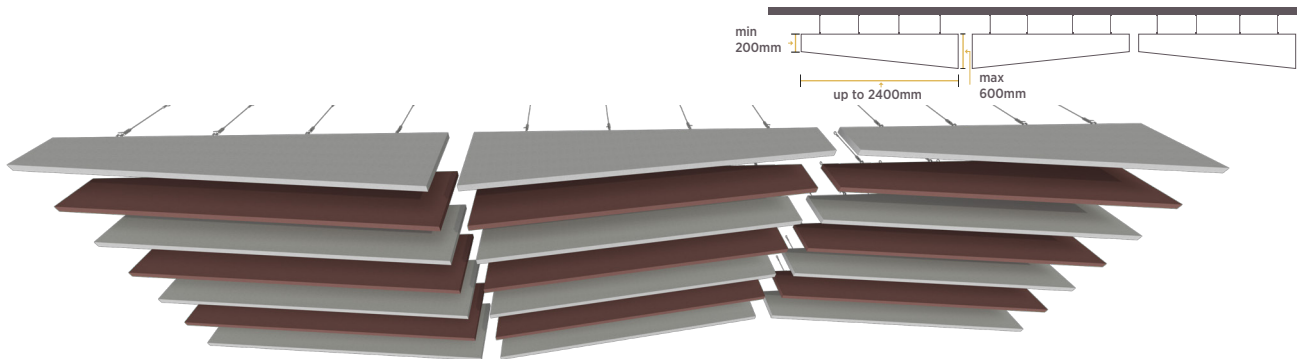
**Concave**



**Convex**



**Zigzag**



\* Refer to USG Middle East technical team for the size limitation and suspension accessories. Other configurations are available upon request.

