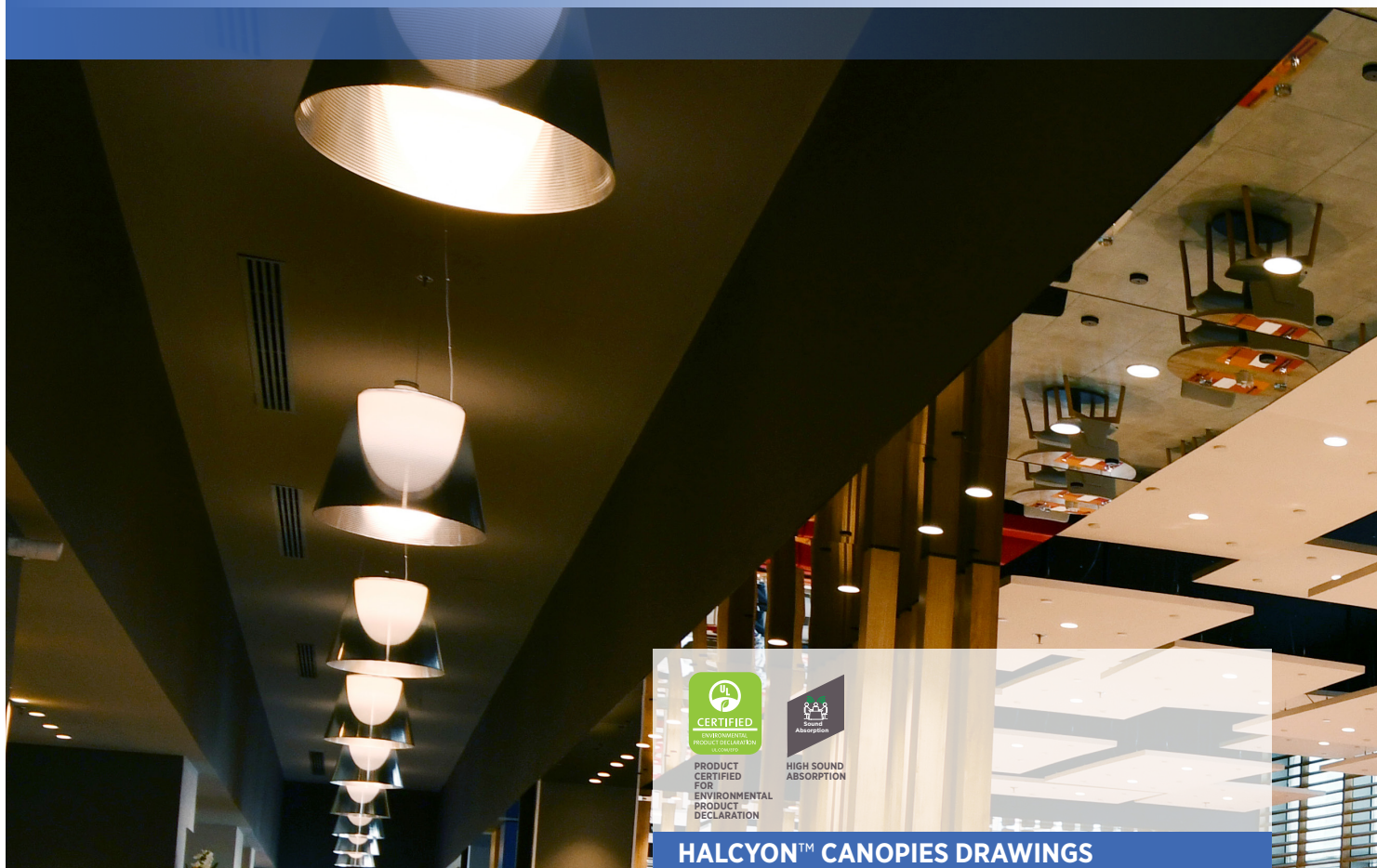


SOFT FIBER HALCYON™ CANOPIES

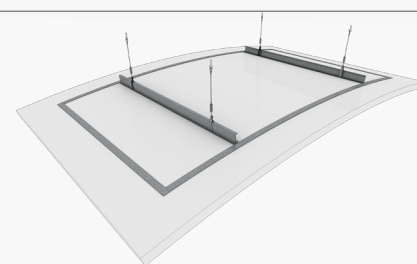


HALCYON™ CANOPIES DRAWINGS

FLAT SYSTEM



CURVED SYSTEM



FEATURES AND BENEFITS

- Glasswool substrate with monolithic visual reduces installation time.
- Available in flat and curved system configurations.
- Exceptional Sound Absorption with NRC values up to 1.0.
- High Light Reflectance (LR-0.88) reduces light fixture and energy use.
- Certificated for Environmental Product Declaration (EPD) as per ISO 14025.
- Washable & scrubbable finish.
- Ideal for providing both visual accents and acoustical control.
- Easy to install.
- ClimaPlus™ 30-year limited system warranty against visible sag, mold, and mildew.

APPLICATIONS

- Open-plenum areas
- Convention halls and concourses
- Reception and lobby areas
- Offices with indirect lighting
- Media rooms
- Libraries
- Restaurants
- Retail
- Hospitality

AVAILABLE COLOR



Explore the complete range of colors in our soft fiber ceiling finish options leaflet

SOUND ABSORPTION

Frequency, Hz	125	250	500	1000	2000	4000	NRC*
40mm	0.60	0.90	1.0	1.0	1.0	1.0	1.0

* Calculated to ASTM C 423-01



It consists of a stainless-steel String dropping from the soffit and a Spiral Anchor (Spring) that is fixed on the tiles through helicoidal rotation. The String is adjustable to suit different plenum heights. The Spring is designed to safely hold the tile weight of a floated ceiling.

Materials Classification

Stainless Steel 1.5mm wire diameter with breaking force of 2.10 KN.

Product Specs

Suspension Rope with Cable Gripper & Hook dia 1.5mm.

Spiral Anchor

dia 38mm.

ASTM & Code Standards

Stainless Steel Wire: ASTM A 580/A 580M, Type 304, nonmagnetic. Design load requirements as per ASTM C635.





SYSTEM COMPONENTS



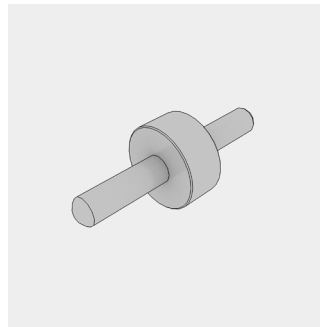
Canopy Panel



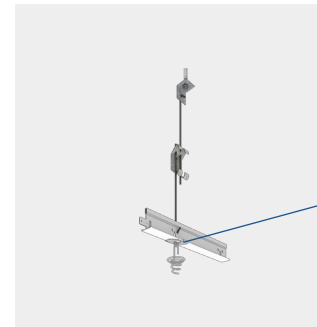
Spiral Hook dia 38mm



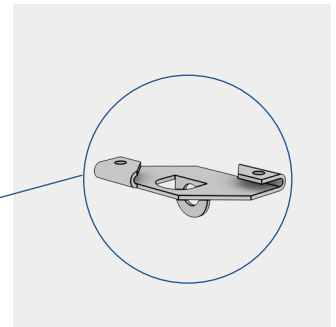
Cable Gripper with Hook and Wire Rope 1.5mm



Connecting Guiding Pin (optional)



(Option 2) Donn® Grid Suspension System



Main T Clip 25mm

SYSTEM SPECIFICATION

Halcyon™ Canopies Acoustical Ceiling meets the specifications in accordance with ASTM E1264.

Materials Classification

Type B, Form B2, Pattern G

Substrate and Surface Finish

Glasswool substrate laminated with factory applied painted fiberglass scrim and back fiberglass tissue

Thickness

Standard: 40mm, other thicknesses are available upon request

Panel Arrangements

Refer to the systems configurations table

Edge Detail Trim

Square encapsulated

Weight

40mm [5.6 kg/m²]

Noise Reduction Coefficient

[NRC]

[1.0]

Mold Prevention Application as per ASTM D3273

Rate 10: Resistant to mold growth

Humidity Resistance

Maximum 99% RH / 40°C

Light Reflectance Coefficient

[LR]

Based on the finish color, up to 0.88

Color

Standard White similar to RAL 9016.

Other colors are available upon request

Surface Burning Characteristics as per ASTM E84

Class A

EN 13501-1 Class of Reaction to Fire Performance

A2-s1,d0

Recycled Content

40%

Thermal Conductivity

$\lambda = 0.034 \text{ W/m}^2\text{K}$

Washability / Scrubbability as per ASTM D4828 & D2486

Exceeds 1000 Wash/Scrub cycles without surface break or the extent of abrasion upon request

Maintenance

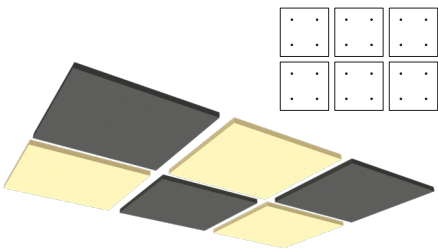
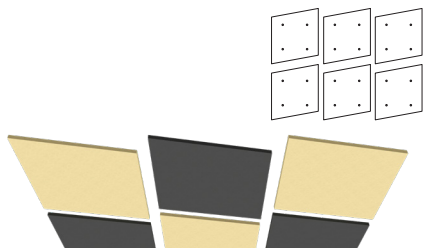
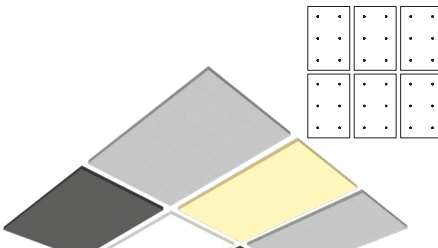
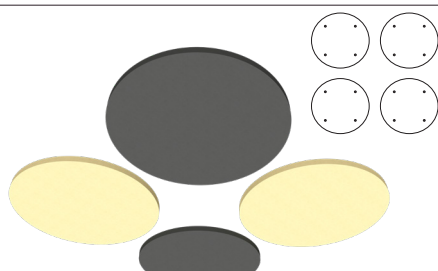
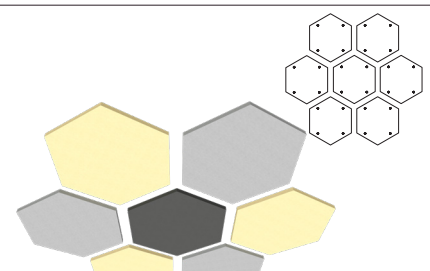
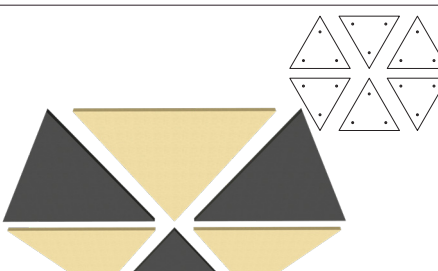
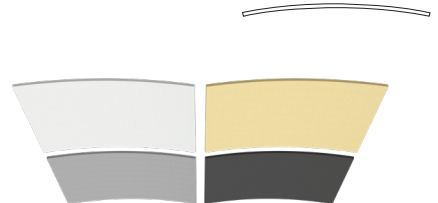
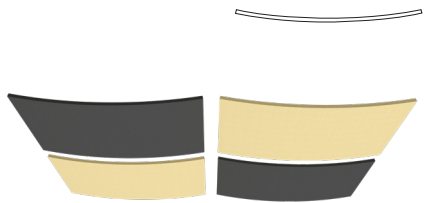

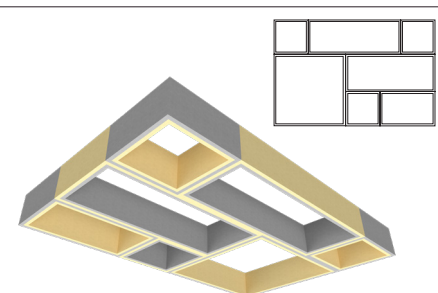
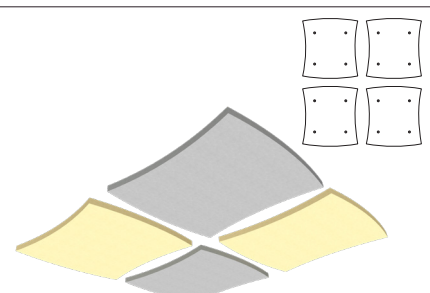
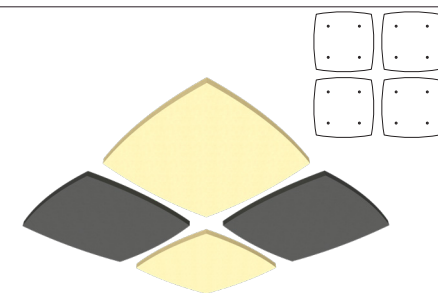
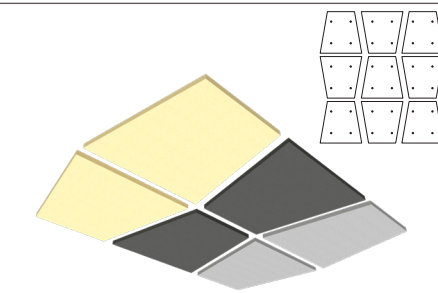
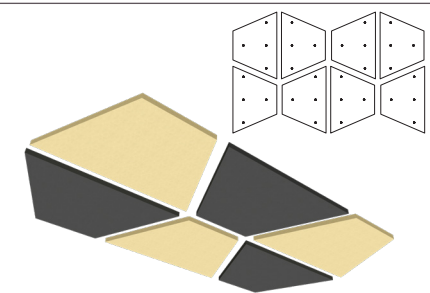
The panel can be cleaned easily with a soft brush or vacuum. To clean the panel, use a clean, white cloth. Use warm water or a mild detergent and wipe the panel surface.

Additional Information

- USG Middle East's Halcyon™ Canopies are flat. However, they will exhibit an inherent deflection, which may be more apparent as the proximity to adjacent surfaces is reduced. This deflection should be no more than 5mm. Local environmental conditions may increase this variance.
- Take care to minimize movement due to airflow within a space.
- Panels must be ordered in multiples of two.
- Custom sizes rather than the system configuration table. Shape and color options are available upon request. Consult USG Middle East technical team.



SYSTEMS CONFIGURATIONS*

Square 	Parallelogram 	Rectangle 
Circle 	Hexagon 	Triangle 
Arc Concave 	Arc Convex 	Cloud 
Box 	Curved Concave 	Curved Convex 
Trapezoid 1 	Trapezoid 2 	<p>* Refer to USG Middle East technical team for the size limitation and suspension accessories. Other shapes are available upon request.</p>

