

# CELEBRETTO®

## ALLURE



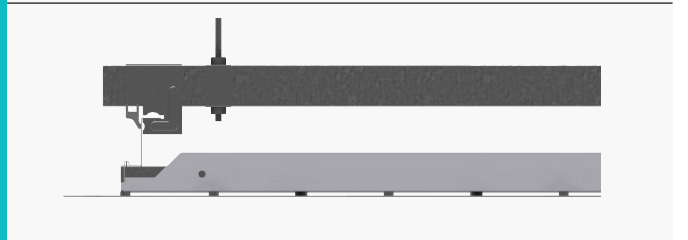
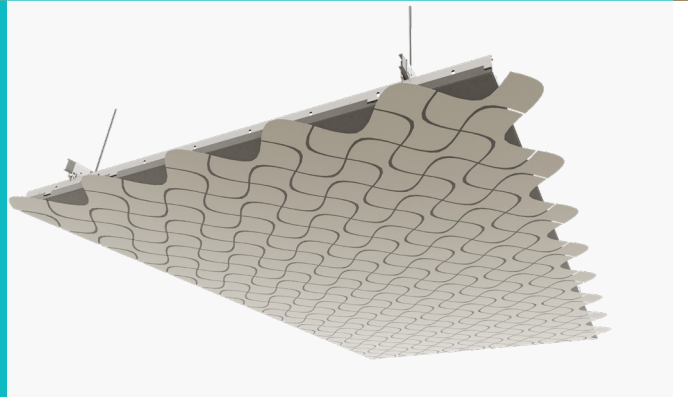
### FEATURES AND BENEFITS

- Allure is a distinctive ceiling solution that unlocks innovative design capabilities like multi-layered solutions, impressive curvilinear designs, and multicolored options.
- Fashion your ceiling design into organic, complicated, and uninterrupted shapes that lie beyond the scope of any preconfigured architectural pattern and imprint it across your space.
- Scalable and seamless panel solutions.
- Growing range of patterns or customizable unique designs.

### APPLICATIONS

- Hotel lobbies
- Restaurants
- Commercial spaces
- Offices
- Lounges
- Open halls
- Reception
- Corridors

### ALLURE DRAWINGS



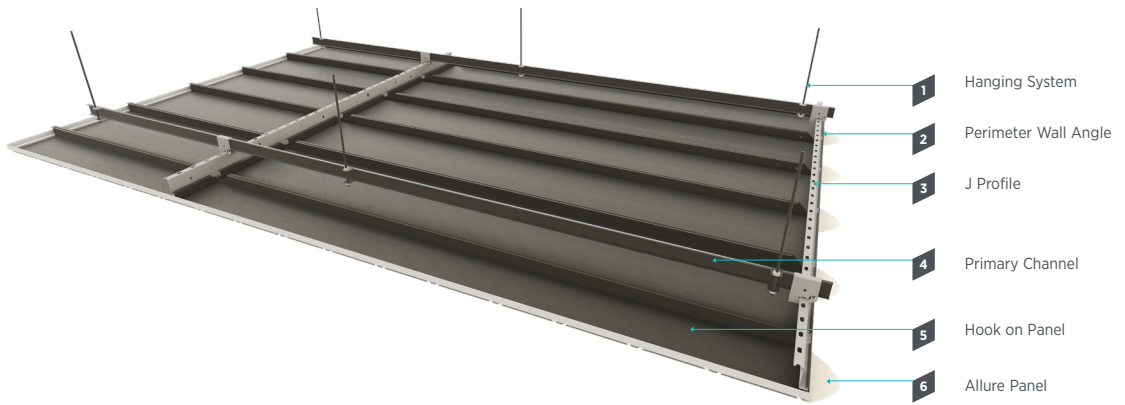
### AVAILABLE FINISHES



Explore our complete range of options in **CELEBRETTO® Colors, Finishes and Perforations Pattern** catalogue for detailed insights.



**ALLURE SYSTEM DRAWINGS**



# SYSTEM SPECIFICATION

**Material Classification**

Type C,  
Form C2,  
Pattern G

**Thickness**

Powder coat finish: 0.6mm – 1.4mm  
Wooden finish: 0.6mm  
Hook-On Panel Height  
40mm to 200mm

**Panel Width**

Up to 1200mm

**Panel Length**

Up to 2400mm

**Color**

Standard: RAL 9016, RAL 9006 and RAL 9010.  
Other RAL colors are available upon request.  
Wooden patterns are available upon request

**Light Reflectance Coefficient [LR]**

Based on the finish color and perforation pattern, LR up to 0.82

**Surface Burning Characteristics per ASTM E 84**

Class A

**Additional Information**

- Thickness depends on panel sizes and project requirements
- Consult USG Middle East technical team for other panel widths



## ALLURE CEILING ACOUSTICAL PERFORMANCE

USG Middle East supplies metal ceiling panels with a range of acoustical performance to meet the needs of all kinds of projects. A variety of sound-absorbing backing options are available. Consult with the USG Middle East technical team for further guidance.

## ITEM CODIFICATION

S: Steel  
SS: Stainless Steel

ALR: Allure

600: First Dimension

1200: Second Dimension

7: Material Thickness (0.7mm thickness)

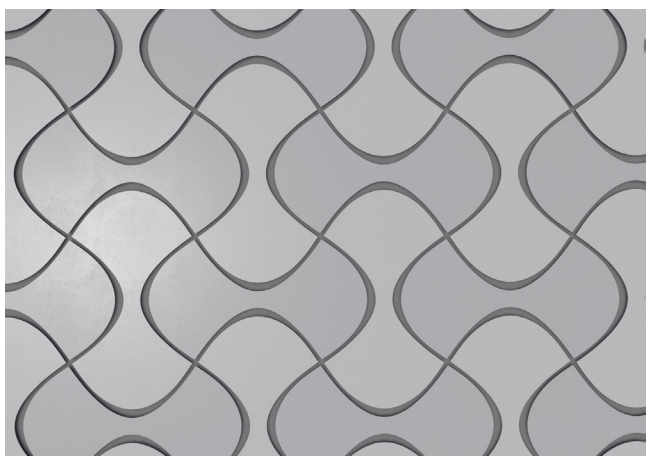
R1035: RAL 1035 powder coated finish

**SALR-60012007R1035**



## SYSTEMS CONFIGURATIONS\*

### LATCH



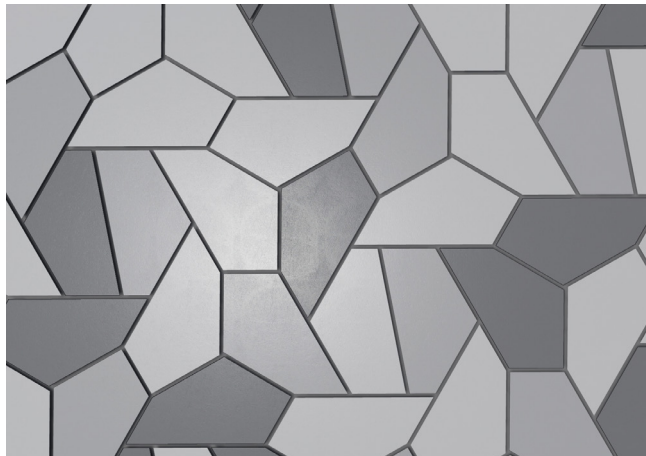
#### PANEL TYPES



#### LATCH Panel A

Panel Width: 600 mm  
Panel Length: 1000mm

### BLOSSOM



#### PANEL TYPES



#### BLOSSOM Panel A

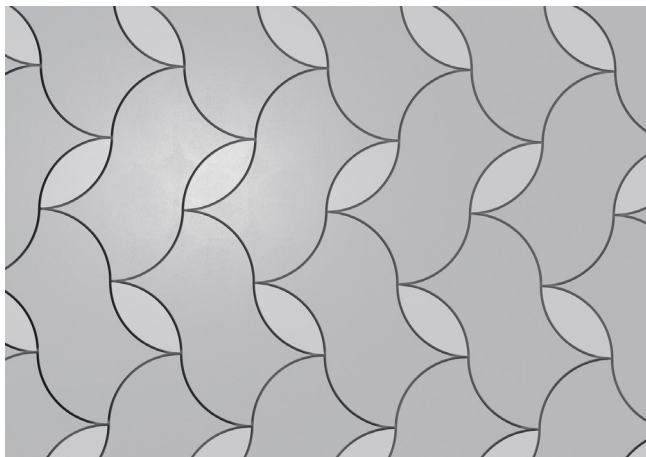
Panel Width: 450 mm  
Panel Length: 650mm



#### BLOSSOM Panel B

Panel Width: 400 mm  
Panel Length: 800mm

### BRAID



#### PANEL TYPES



#### BRAID Panel A

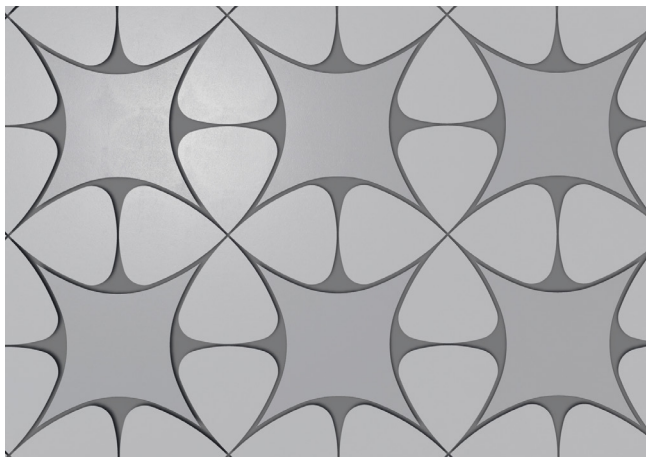
Panel Width: 900 mm  
Panel Length: 1100mm



#### BRAID Panel B

Panel Width: 350 mm  
Panel Length: 400mm

### HARMONY



#### PANEL TYPES



#### HARMONY Panel A

Panel Width: 750 mm  
Panel Length: 750mm



#### HARMONY Panel B

Panel Width: 450 mm  
Panel Length: 500 mm

\* All dimensions are customizable to fit the client's requirements.