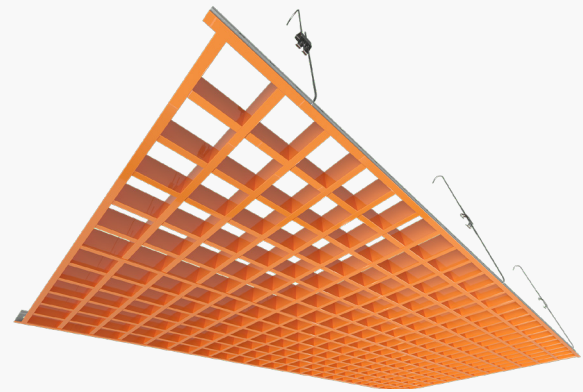


CELEBRETTO[®] QUADRA CELL



QUADRA CELL DRAWINGS



FEATURES AND BENEFITS

- Available in two main designs: T15 Lay-on ceiling and trackless ceiling systems.
- Economical grade ceiling solution that meets all commercial design concepts.
- Easy integration with MEP services.
- Quick installation.
- Accessible ceiling panel for the T15 Lay-on.
- Wide variety of modules and sizes.
- Available in Y (pyramid) and U shape designs.

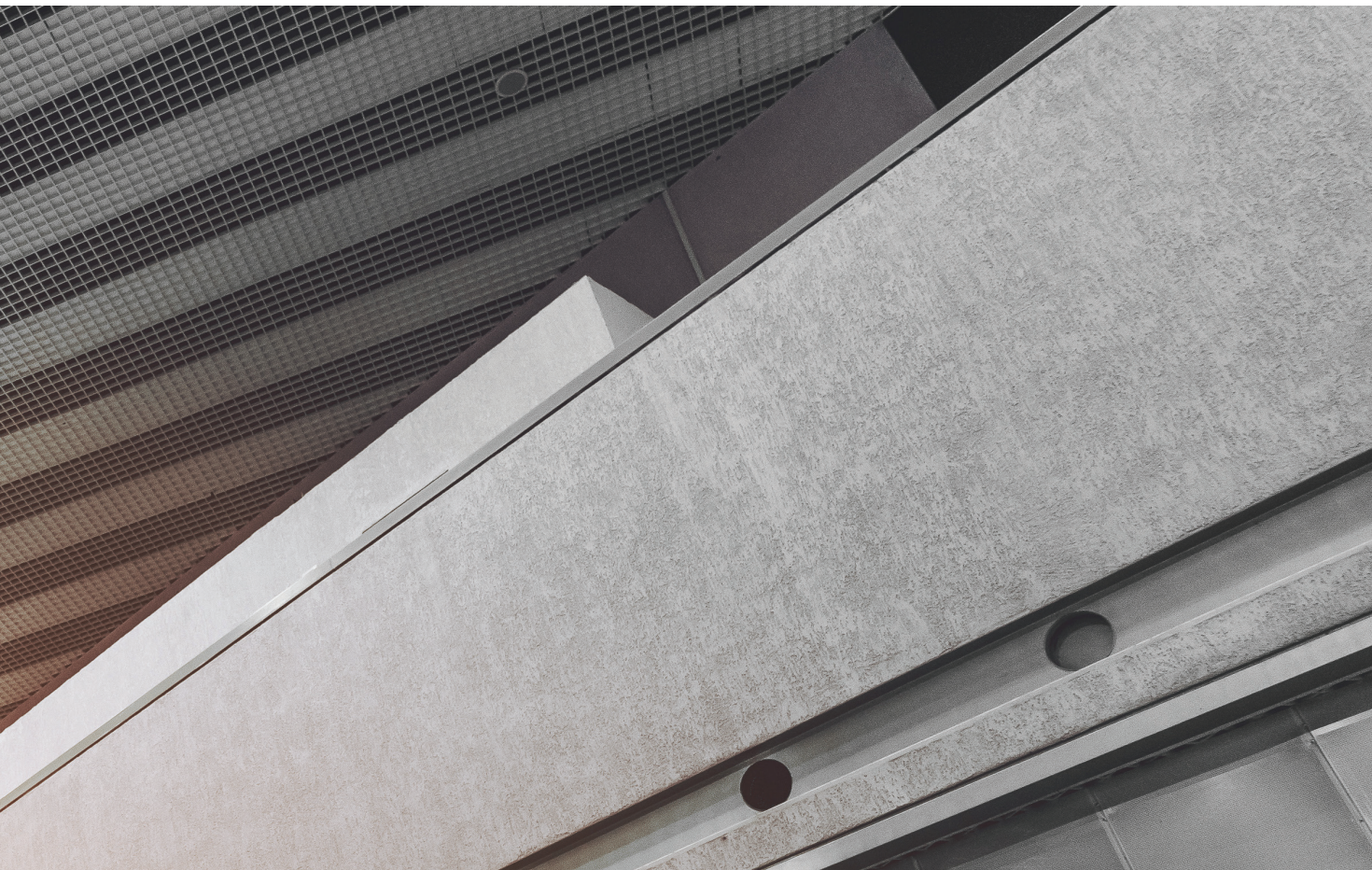
APPLICATIONS

- Airports
- Entertainment
- Restaurants
- Retail
- Shopping malls
- Electrical rooms

AVAILABLE COLOR



Explore our complete range of options in **CELEBRETTO[®] Colors, Finishes and Perforations Pattern** catalogue for detailed insights.



SYSTEM SPECIFICATION

Material Classification

Type C,
Form C2,
Pattern G

Thickness

Powder coat finish: 0.4-0.5mm
Pre-painted aluminium: 0.4mm
Wooden finish: 0.6mm

Panel Size (Lay-on system)

600x600mm

Module Sizes

50x50mm, 75x75mm,
100x100mm, 150x150mm,
200mmx200mm

Module Height

U Shape: 50mm
Y Shape (Pyramid): 60mm

Exposed Module Width

U Shape: 15mm
Y Shape (Pyramid): 10mm

Surface Burning Characteristics per ASTM E 84

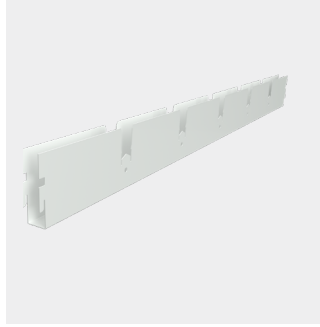
Class A

ACOUSTIC PERFORMANCE

USG Middle East supplies metal ceiling panels with a range of acoustical performance to meet the needs of all kinds of projects. A variety of sound-absorbing backing options are available. Consult USG Middle East technical team for further guidance.

SYSTEM COMPONENTS

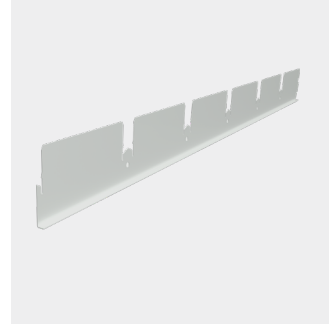
U SHAPE T15 LAY-ON SYSTEM COMPONENTS



T15 Main Profile



T15 Deputy Profile



T15 Lay-On Perimeter Profile

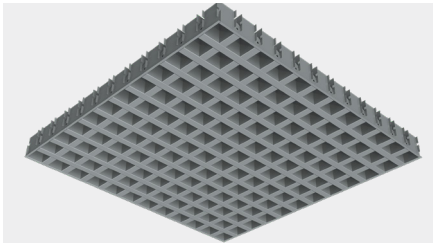


Suspension Accessories
Rod Hanger,
Butterfly Clips

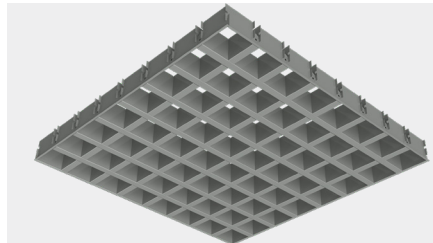


Suspension System
Main Tee 3600mm, Cross Tee 1200mm, Cross Tee 600mm,
Perimeter Wall Angle

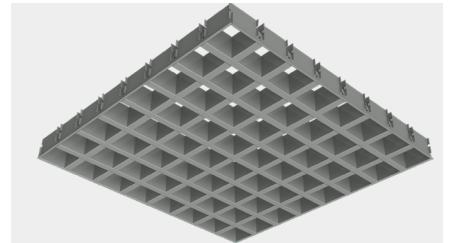
U SHAPE T15 LAY-ON SYSTEM CONFIGURATIONS



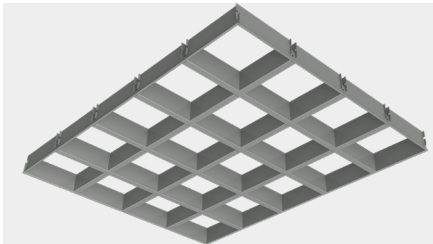
50x50mm



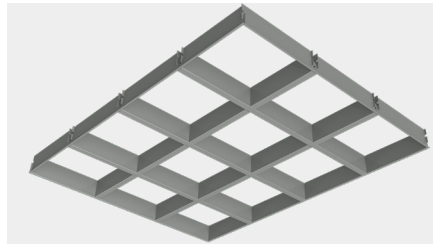
75x75mm



100x100mm



150x150mm



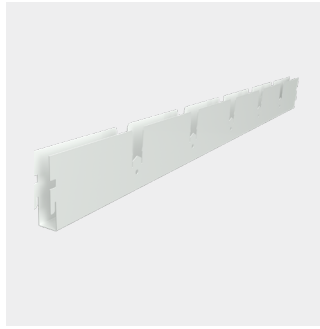
200x200mm

LIMITATION

1. T15 Lay-on profile is 15 x 50mm (WxH).

SYSTEM COMPONENTS

TRACKLESS SYSTEM COMPONENTS



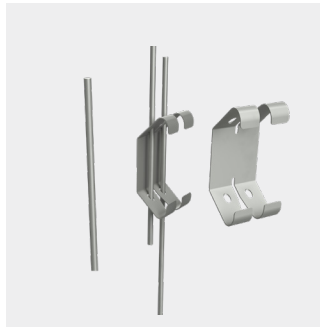
Main Profile



Deputy Profile

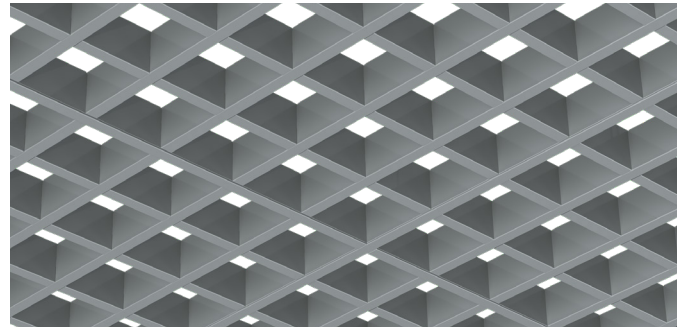


T15 Lay-On Perimeter Profile

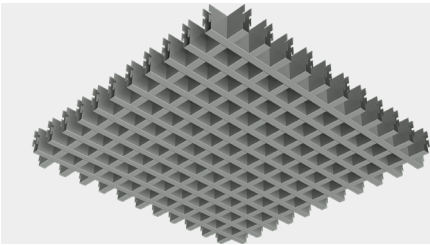


Suspension Accessories

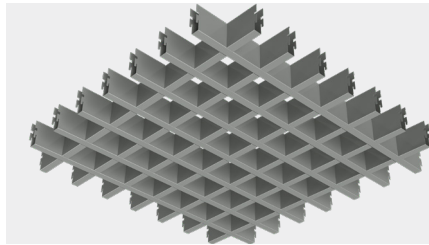
Rod Hanger,
Butterfly Clips



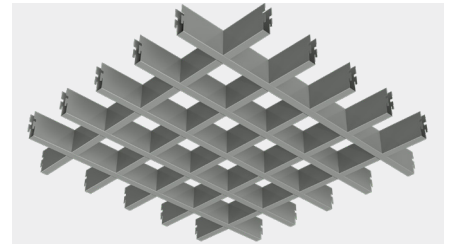
TRACKLESS SYSTEM CONFIGURATIONS



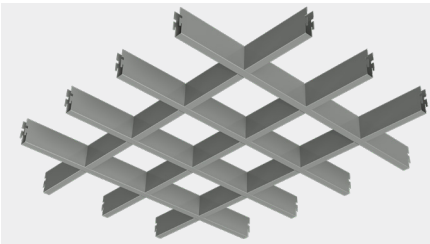
U-Shape 50x50mm



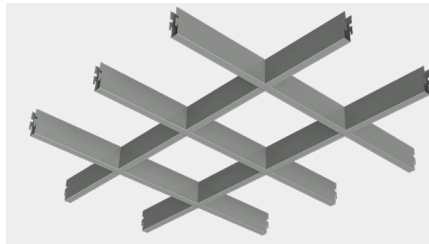
U-Shape 75x75mm



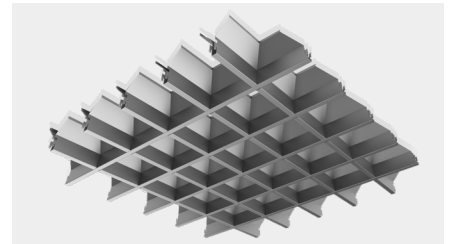
U-Shape 100x100mm



U-Shape 150x150mm



U-Shape 200x200mm



Y-Shape (Pyramid)

75x75mm, 100x100mm,
150mmx150mm & 200x200mm

LIMITATION

1. U shape Trackless profile is 15 x 50mm (WxH).
2. Y shape (Pyramid) Trackless profile is 10 x 60mm (WxH).
3. The Trackless System accessibility is limited after installation. If accessibility is a priority, please consider using the Lay-On System or consult USG Middle East technical team for other options.