

**METAL  
FRAMING**

# **USG MIDDLE EAST METAL FRAMING**

©2024 Factory of USG Middle East LTD. Co. All rights reserved.  
VER. 02 / 2023-2024 / Doc.Ref: MF-CAT001-2

**USG ME**   
INNOVATIVE SOLUTIONS. EVERYTIME.



# INNOVATIVE SOLUTIONS. EVERYTIME.



## SMART INNOVATION FIRST.

USG Middle East (USGME) is a Joint Venture between USG (a Knauf Subsidiary) and Juman Industrial Investment Company-Saudi investor in the Building Materials segment (juman.sa). Since being founded in Dammam, Saudi Arabia in 1985, USGME has been a leading manufacturer of Ceiling, Interior Finishing, and Drywall Partitions. Our products are supplied to more than 45 countries through 4 regional manufacturing plants via a wide network of sales and technical offices and distributors. Our product range is trusted for use in homes, offices, hospitals, schools, universities, cinemas, and retail spaces, as well as in many of the world's most iconic projects.

**Our mission** is to deliver innovation that helps you work smarter, do more, and build better. Architect and construction companies need safer, faster, less costly ways to build. Owners need buildings with lower operating costs. There is a rapidly growing need for sustainable construction to address global environmental challenges. That is why throughout USG ME's combined history, we have continually developed innovative wall and ceiling products and systems for our customers.

## PRODUCTS

### INNOVATION AND SUPPORT YOU CAN TRUST.

USG Middle East's ever-growing portfolio of groundbreaking products and end-to-end solutions is backed by unparalleled quality service. With an extensive distribution and sales network operating for more than 35 years across the MENA Region, our dedicated teams provide local expertise and high levels of support in finding the right solutions for your needs. USG Middle East's main product categories are:

**Ceilings:** With over 35 years of experience, we are a premier acoustic panel and specialty ceilings innovator that enhances the overall aesthetic of our customers' projects. Our portfolio includes acoustical, gypsum tile, metal, and specialty ceilings, as well as both standard and seismically rated suspension systems.

**Plasterboard:** Used to make interior walls and ceilings, our plasterboards are the result of over 100 years of scientific experimentation and success. Cleaner, faster, and more easily handled by fewer workers, we have installed more than 725 million square meters of plasterboard worldwide.

**Substrates:** Compared to traditional wet wall solutions, our substrates are versatile and lightweight—thereby reducing installation costs while speeding up construction. This is ideal for unique building designs as they can be curved and applied to various finishes, including paint, tile, stone, and textured.

**Metal framing:** Our range of metal components and profiles allows the construction of drywall and ceilings to be completed faster, more accurately, and cleaner than conventional methods. This state-of-the-art framing can be engineered to suit a job site's requirements while achieving industry standards.

**Finishes:** Used for jointing, bonding, skimming, and creating textured finishes for building interiors. We boast a broad range of products for compounds, along with our extensive capability to formulate solutions according to your needs.





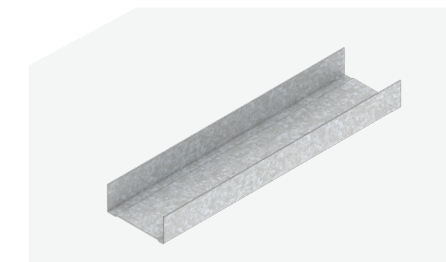
# DRYWALL PARTITION SUSPENSION

## DRYWALL PARTITION SUSPENSION



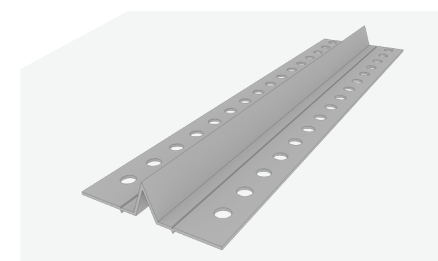
### DRYWALL STUDS - C SHAPE

- Used as vertical C channels inserted between the top and bottom tracks to hold up wall boards in both interior and exterior applications.
- Available in regular flange stud and deep flange stud.



### DRYWALL TRACK - U SHAPE

- Used in framing applications as the top and bottom channels for securing wall studs at floor and ceiling junctions.
- Available in regular flange track, deep flange track and extra deep track.



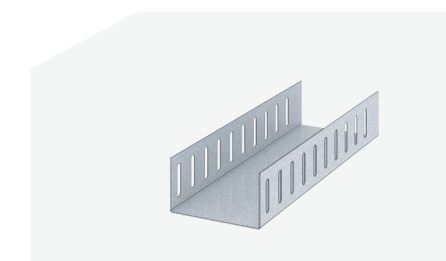
### DRYWALL CONTROL JOINT

- Allowing for expansion in both walls and ceilings, control joint has been designed for movement of up to 6m in each direction.



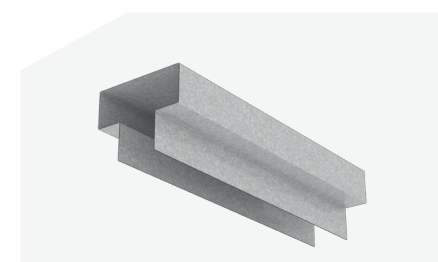
### CURVED TRACK

- Used in special curved framing applications as the top and bottom channels for securing wall studs at floor and ceiling junctions, used in framing application for constructing curved walls and ceilings domes.
- Curve radius can be adjustable on site as per the project requirement.



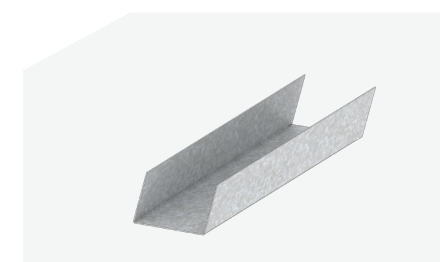
### DEFLECTION SLOTTED TRACK - U SHAPE

- Used in wall assemblies allowing for vertical deflection of floor beams or floor decks above the interior partitions.
- Custom made flange depth varying from 50 to 100mm suitable for vertical deflection movement exceeding 30 mm.
- Used for a wall height which above of 3.5m.



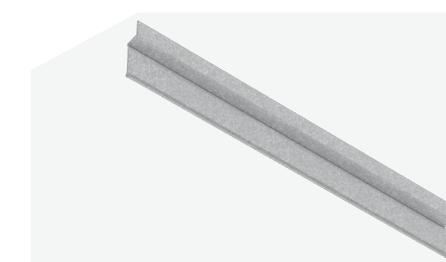
### DEFLECTION FIRE TRACK - T SHAPE

- Used in Fire Rated wall assemblies allowing for vertical deflection of floor beams or floor decks above the interior partitions.
- Custom made Flange depth varying from 60 to 100 mm is suitable for vertical deflection movement exceeding 30 mm.
- Used for a wall height that is above 3.5m.
- Used to achieve 1, 2 and 3 hours fire rated in wall assemblies.



### INCLINED TRACK

- Used in special elevated framing applications as the top and bottom channels for securing wall studs at floor and ceiling junctions, used in framing application for constructing Inclined Walls.
- Radius can vary as per the project requirement.



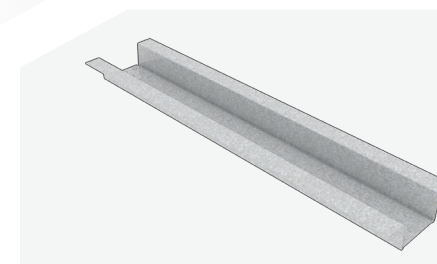
### RESILIENT CHANNEL SINGLE LIP

- Used in Drywall framing applications to improve the STC rate in Wall Partition.
- The spacing between the horizontal channels should be 600mm, with a distance of 50mm from the bottom and a maximum of 150mm from the top.



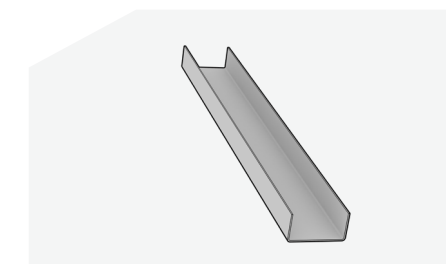
# DRYWALL CEILING SUSPENSION

## DRYWALL CEILING SUSPENSION



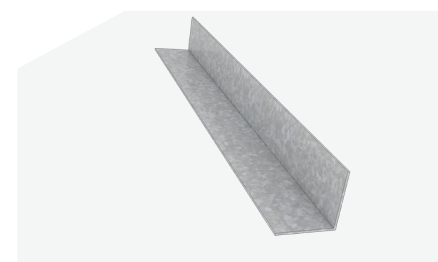
### FURRING CHANNEL DRYWALL SUSPENSION

- Furring Channels are hat channels used to hold wall boards in Drywall ceiling and wall lining applications. It is also used as framings for drop down ceiling.



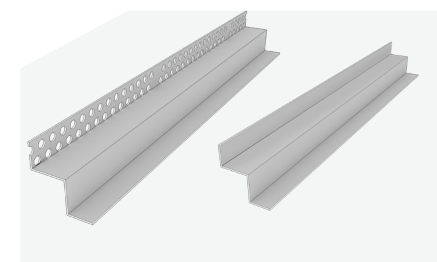
### PRIMARY CHANNEL- DRYWALL SUSPENSION

- Used as main carrying channels in the Drywall Ceiling suspension systems where it is suspended from the overhead structure using different types of hangers.
- It also forms along with the perimeter angles a solid horizontal bridging to resist rotation and axial loads.
- Optional used as suspension hangers.



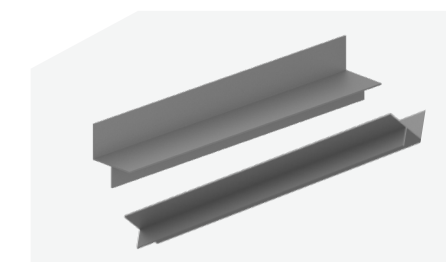
### PERIMETER ANGLE- DRYWALL SUSPENSION

- Used on the perimeter of the Drywall ceiling suspension systems and optional as suspension hangers.
- Also it is used along with primary channels to provide horizontal bridging to resist rotation and axial loads in wall applications.



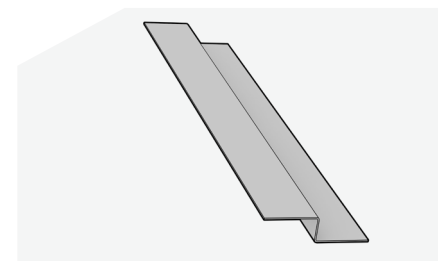
### DRYWALL W ANGLE

- Create a reveal edge look at ceiling perimeter installations whilst helping to hide imperfections in the abutting walls. The W angle considered as part of the drywall ceiling attached to the wall.



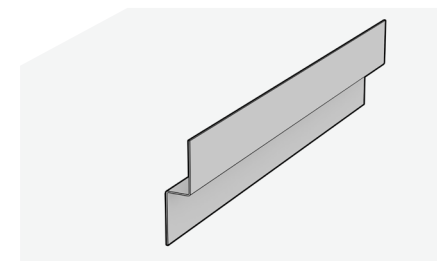
### F PROFILE SHADOW ANGLE

The F Profile Shadow Angle, crafted from high-quality aluminum alloy, offers a superior solution for drywall ceiling perimeter installations. Available in two exposed widths, 15mm and 20mm, this product ensures many design integration. With a lip height of 13mm, it guarantees a secure fit while maintaining a discreet appearance. Suitable for both direct and indirect suspension, it creates concealed ceilings with a sleek, modern look.



### Z CHANNEL

- Easily accommodates rigid insulation and provides for the attachment of gypsum wallboard, veneer or plaster to the interior of masonry walls.



### SHADOWLINE Z-STOPPAGE ANGLE

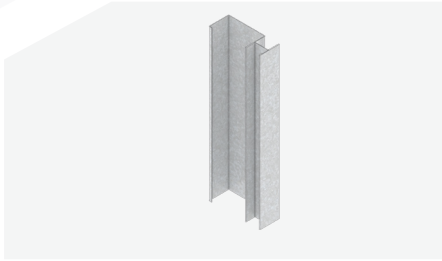
- Create a reveal edge look at ceiling perimeter installations whilst helping to hide imperfections in the abutting walls. The Z-stoppage angle considered as part of the grid and suspension system attached to the wall.



# SHAFTWALL SUSPENSION

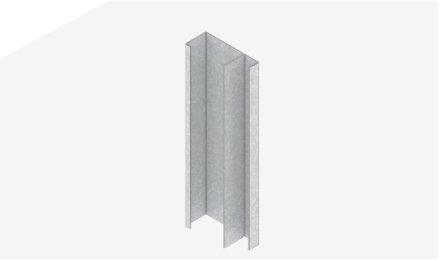


## SHAFTWALL SUSPENSION



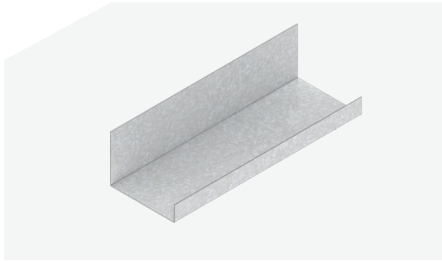
### SHAFTWALL FRAMING SYSTEMS - CH STUD

- Used as vertical C channels for Shaftwall installations when access is only possible from the outside of the shaft, CH-Studs are created to hold up adjacent Shaftwall boards in the H profile as friction fit sliding. Along with J-Runner deflection head tracks and bottom J-Runner, are utilized throughout the wall system. Outer layer wallboard can be directly fixed at the C profile outer face.



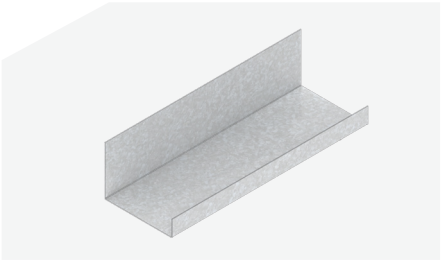
### SHAFTWALL FRAMING SYSTEMS - E STUD

- Used as a part of the USG ME Shaftwall Systems, E-Stud steel sections are used for starter studs, intersections, door openings, and end studs. Outer wallboard can be directly fixed at the C profile outer face.



### SHAFTWALL FRAMING SYSTEMS - J RUNNER

- Used in Shaftwall framing applications as the top and bottom channels for securing the CH and the E wall studs at floor and ceiling junctions. Profile height 25mm, 50mm.



### SHAFTWALL FRAMING SYSTEMS - JAMB STRUT

- Used in Shaftwall framing applications as the top and bottom channels for securing the CH and the E wall studs at floor and ceiling junctions.
- Available in deep flange track and extra deep track. Profile height 25mm, 75mm and 50mm, 75mm.



# DRYWALL PARTITION SUSPENSION ACCESSORIES

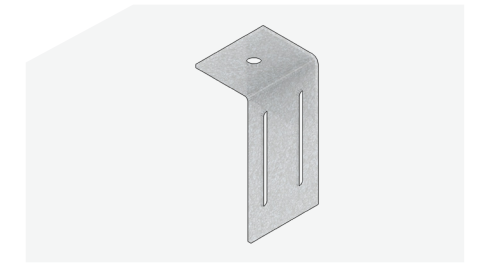


## DRYWALL PARTITION SUSPENSION ACCESSORIES



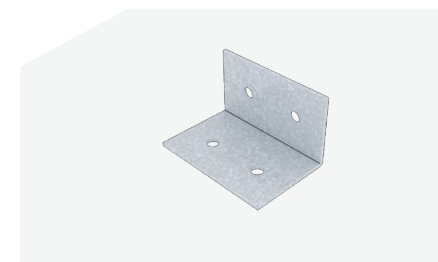
### DRYWALL FLAT STRIPS (WALL BRACING)

- Used in framing applications as wall bracing which provides significant resistance to lateral loads.
- Used as X - Bracing in wall assembly to resist racking and comply with seismic requirements.
- System applies for walls height above 3.5m.



### DEFLECTION CLIP

- Used in place or in combination with deflection track and allowing for vertical movement above wall partitions.



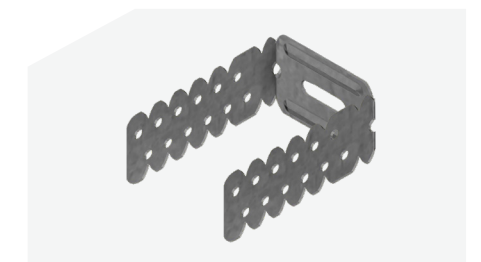
### DRYWALL FIXING BRACKET

- Used in wall assemblies allowing for supporting a vertical load or providing lateral bracing CRC connections and floor joist hangers.



### ACOUSTIC V BRACE

The high wall system consist of two C-Studs braced together with a proprietary acoustic V brace supplied by USG Middle East. This high wall system can reach up to 20 meters height, particularly cinema walls where high range acoustic performance is required. The acoustic V brace is spaced at 1200mm(min.) - 1800mm(max.) centers vertically connecting the C-studs profiles. Gypsum boards are then screw fixed to steel framing with bugle headed, drill point gypsum screws.



### ADJUSTABLE WALL LINER BRACKET

The Adjustable Wall Liner Bracket is specifically designed for close-fit applications in wall lining installations. It is intended to be directly fixed to the main substrate, providing a secure attachment for the Universal C Stud. This combined system of the Adjustable Wall Liner Bracket and the Universal C Stud ensures a seamless wall lining installation that effectively conceals any imperfections in the main substrate.



# DRYWALL CEILING SUSPENSION ACCESSORIES

## DRYWALL CEILING SUSPENSION ACCESSORIES



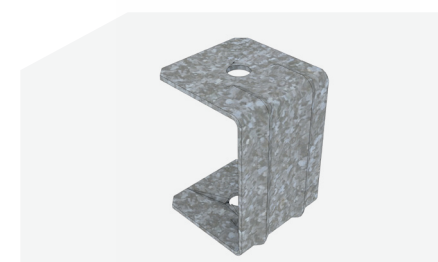
### ACOUSTIC ISOLATION HANGER

- Designed to decouple wall framing and ceiling systems. The resilient Anti-Vibration rubber used in the Hanger, absorb energy and improve STC (airborne) and IIC (impact) acoustic ratings.
- The Hangers used in a variety of wall and mainly in ceiling mass barrier applications, where structural support combined with vibration isolation is required.



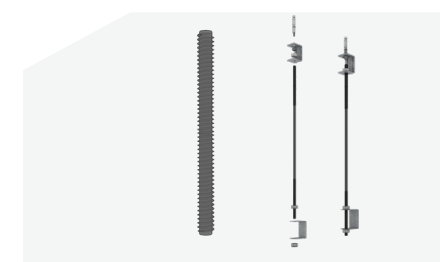
### PRIMARY CHANNEL BRACKET

- Primary Channel Bracket (PCB-RH) is suspended by wire hanger used to fix the primary channel into the Adjustable Wire Connecting Clip. The bracket is used as any alternative option for the
- Primary Channel C Bracket with threaded rod suspension system in ceiling assemblies.
- USG Middle East recommends using the Primary Channel Bracket when single layer gypsum board is installed.



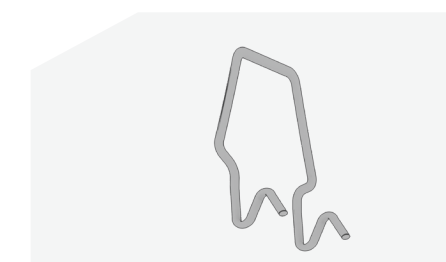
### PRIMARY CHANNEL C-BRACKET

- C-Brackets are steel accessories used to fasten the Primary Channel into the threaded rod (M6) suspension hanger that is anchored in the ceiling soffit above.



### THREADED ROD HANGERS

- The Threaded Rods are designed to be used in high tension due to being relatively long rods and being threaded. They are used as a ceiling suspension by being fixed to hard point on one end such as soffit of concrete slab/beam or steel structure with appropriate fasteners and ceiling frame on the other.



### WIRE CONNECTING CLIP (WCC)

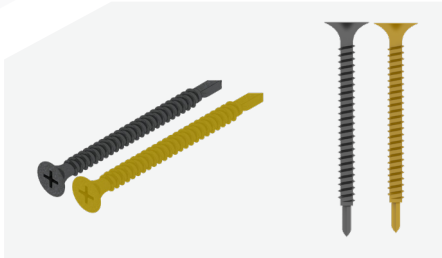
- The 2.5 mm wire connecting clips (WCC) are widely used to fasten the furring channels to the primary channels of 38 mm width. WCC are mainly used in the Drywall ceiling and the Clip-in ceiling applications.



# METAL FRAMING ACCESSORIES

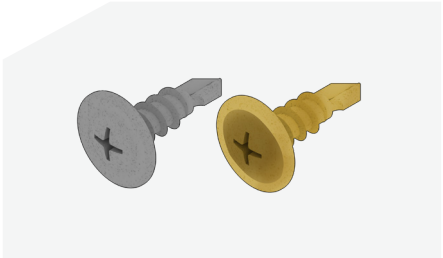


## METAL FRAMING ACCESSORIES



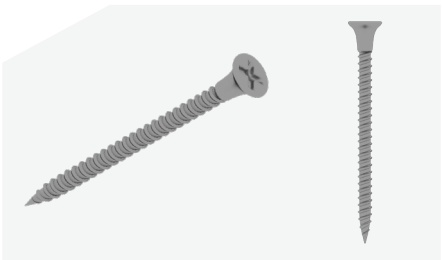
### SELF DRILLING SCREW

- Self-Drilling Screws are essential components for securing single-layer and multi-layer drywall panels, insulation, and accessories to heavy gauge metal structures. They are specifically designed for use with USG ME wallboards assemblies.



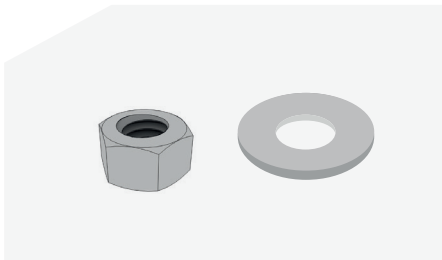
### WAFER HEAD SELF DRILLING SCREW 13MM

- Wafer head screws are designed with drill points used for securing drywall profiles together, offering a substantial holding surface. They are also suitable for mounting accessories on steel structures up to a thickness of 2.5mm.



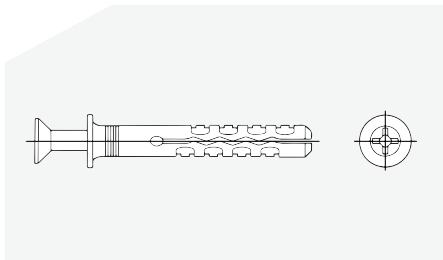
### SELF TAPPING SCREW

- Plasterboard screws are fasteners for single-layer and multi-layer drywall planking, insulation and accessory mountings on steel structures made of light gauge steel up to 0.6mm thickness.
- Up to 75mm length.



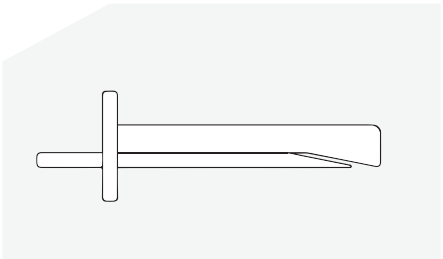
### HEX NUT AND WASHER

- Hex Nut is a strong fastener in various applications made of hot dipped galvanized steel (HDG).
- The accessory is an excellent choice for all USG ME hanging systems.
- Available in 6, 8 and 10 mm size.



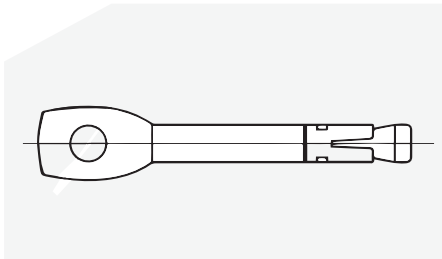
### HAMMER FIX

- Hammer Fix is a reliable solution for the metal framing fastening needs. Crafted with a zinc-coated, corrosion-resistant nail, securely engaged in a sturdy nylon plug, this fixing tool is designed to effortlessly secure metal framing for drywall partitions onto masonry surfaces. Offering a quick & efficient fixing option, the Hammer Fix is our easy solution for various applications.



### WEDGE ANCHOR

- Wedge Anchor designed for the USG ME systems installation. Ideal for ceiling perimeter installations and partition construction necessitating fire resistance, the Wedge Anchor excels. Its applicability extends to both cracked and un-cracked concrete, in addition to natural stone and solid block surfaces, ensuring adaptability across various applications.



### WIRE HANGER

- The Ceiling Wire Hanger is a displacement controlled anchor with eye hole. Suitable for suspension of wire hung ceilings. 6mm eyelet for easy installation



# METAL SUSPENSION SAFETY DATASHEET



## METAL SUSPENSION SAFETY DATASHEET

### 1. IDENTIFICATION

#### Product identifier

USG Middle East Drywall/Steel Framed Systems

#### Additional Products

Regular Wall Track, Deep Flange Wall Track, Curved Wall Track, Inclined Flange Wall Track, Regular and Deep Flange Wall Stud, Perimeter Angle, Primary Channel, Furring Channel, Deflection Fire Track, Deflection Clip, J Trims, Corner Beads, W Shape Shadow line Angle, Z Shape Shadow line Stoppage Angle, Z Furring Channel, Wall Bracing Flat Strip, Single Lip Resilient Channel, Wire Connection Clip, Threaded Rod Hanger, Rod Hangers & Adjustable Butterfly Clip, Wafer Head Screw and Drywall Screw.

#### Synonym(s)

Drywall Steel Frame System

#### Recommended use

Interior use.

#### Recommended restrictions

Use in accordance with manufacturer's recommendations.

#### Manufacturer / Importer / Supplier / Distributor information/Company name

USG Middle East Ltd

7410 (WASIL) Street #23, Cross 76 (Right)

Second Industrial City

Dammam 34326 – 4201, Kingdom of Saudi Arabia

Tel: +966 13 812 0995 / Fax: +966 13 812 1029

E-mail: [info@usgme.com](mailto:info@usgme.com) / [marketing@usgme.com](mailto:marketing@usgme.com)

Website: <https://www.usgme.com>

### 2. HAZARD(S) IDENTIFICATION

#### Physical hazards

Not classified.

#### Health hazards

Not classified.

#### OSHA defined hazards

Not classified.

#### Label elements

##### Hazard symbol

None.

##### Signal word

None

##### Hazard statement

None.

##### Precautionary statement

###### Prevention

Observe good industrial hygiene practices.

###### Response

Get medical attention/advice if you feel unwell.

###### Storage

Store as indicated in Section 7.

###### Disposal

Dispose of in accordance with local, state, and federal regulations.

#### Hazard(s) not otherwise classified (HNOC)

Not classified.



METAL SUSPENSION SAFETY DATASHEET

3. COMPOSITION/  
INFORMATION ON  
INGREDIENTS

Mixtures		
Chemical name	CAS number	%
Zinc	7440-66-6	1-20%
Aluminium	7429-90-5	1-10%
Iron	7439-89-6	Balance
<b>Composition comments</b> Low carbon steel strip with hot dipped zinc or zinc/aluminium coating with painted and/or laminated polymer finish. The following list identifies those elements which may exist in steel or which may comprise compounds present in steel or alloy steels. Aluminum, beryllium, boron, calcium, carbon, cerium, chromium, cobalt, copper, hafnium, iron, lanthanum, lead, magnesium, manganese, molybdenum, nickel, niobium, nitrogen, oxygen, phosphorus, selenium, silicon, sulfur, tantalum, tin, titanium, tungsten, vanadium, yttrium, zinc, zirconium.		

4. FIRST-AID MEASURES

<b>Inhalation</b> Due to the physical nature of this product, inhalation is unlikely. There are no known health effects due to inhalation.
<b>Skin contact</b> Edges and notches (where present) may be sharp and can cut skin. Cuts or abrasions should be treated promptly with thorough cleansing of the affected area. Seek medical attention for severe cuts or abrasions
<b>Eye contact</b> Sharp edges and notches (where present) may cause cuts and irritation. If eye is cut or otherwise damaged, seek medical attention.
<b>Ingestion</b> Due to the physical nature of this product, ingestion is unlikely. There are no known health effects due to ingestion.
<b>Most important symptoms/effects, acute and delayed</b> Under normal conditions of intended use, this material does not pose a risk to health.
<b>Indication of immediate medical attention and special treatment needed</b> Provide general supportive measures and treat symptomatically.
<b>General information</b> Ensure that medical personnel are aware of the material(s) involved.

5. FIRE-FIGHTING  
MEASURES

<b>Suitable extinguishing media</b> Use fire-extinguishing media appropriate for surrounding materials.
<b>Unsuitable extinguishing media</b> Not applicable.
<b>Specific hazards arising from the chemical</b> Not a fire hazard.
<b>Special protective equipment and precautions for firefighters</b> Selection of respiratory protection for firefighting: follow the general fire precautions indicated in the workplace. Self-contained breathing apparatus and full protective clothing must be worn in case of fire.
<b>Fire-fighting equipment/instructions</b> Use standard firefighting procedures & consider the hazards of other involved materials.
<b>Specific methods</b> Cool material exposed to heat with water spray and remove it if no risk is involved.

6. ACCIDENTAL  
RELEASE MEASURES

<b>Personal precautions, protective equipment and emergency procedures</b> See Section 8 of the SDS for Personal Protective Equipment.
<b>Methods and materials for containment and cleaning up</b> No specific clean-up procedure noted. For waste disposal, see Section 13 of the SDS. Avoid discharge to drains, sewers, and other water systems.
<b>Environmental precautions</b> None.

7. HANDLING AND  
STORAGE

<b>Precautions for safe handling</b> Edges and notches (where present) may be sharp and can cut skin. Unload from package with caution and handle carefully. Observe good industrial hygiene practices.
<b>Conditions for safe storage, including any incompatibilities</b> Falling pieces can pose an injury hazard. Do not store open boxes or individual pieces above chest level. Store away from incompatible materials.

METAL SUSPENSION SAFETY DATASHEET

8. EXPOSURE  
CONTROLS/  
PERSONAL  
PROTECTION

<b>Exposure Standards</b> No exposure standard has been established for the product as supplied. During welding or cutting operations the following Worksafe Exposure Standards should be applied; Zinc oxide fume - 5 mg/m³ TWA Iron oxide fume - 5 mg/m³ TWA as Fe Other Exposure Standards may apply during welding or cutting operations, but are determined by the type of welding or cutting process (ARC, MIG, TIG, gas or plasma) and the electrode(s) used. Each individual operation must be separately assessed for hazards by an experienced Occupational Hygienist.
<b>Occupational exposure limits</b> No exposure limits noted for ingredient(s).
<b>Biological limit values</b> No biological exposure limits noted for the ingredient(s).
<b>Appropriate engineering controls</b> Ventilation is not normally required.
<b>Individual protection measures, such as personal protective equipment</b>
<b>Eye/face protection</b> Wear approved safety goggles.
<b>Skin protection</b>
<b>Hand protection</b> It is a good industrial hygiene practice to minimize skin contact. For prolonged or repeated skin contact use suitable protective gloves.
<b>Other</b> Normal work clothing (long sleeved shirts and long pants) is recommended.
<b>Respiratory protection</b> Not necessary under normal conditions.
<b>Thermal hazards</b> None
<b>General hygiene considerations</b> Handle in accordance with good industrial hygiene and safety practices.

9. PHYSICAL AND  
CHEMICAL PROPERTIES

<b>Appearance</b>	<b>Upper/lower flammability or explosive limits</b>
<b>Physical state</b> Solid.	<b>Flammability limit - lower (%)</b> Not applicable.
<b>Form</b> C profile, U profile, L profile, Z profile, Omega profile, Strip profile	<b>Flammability limit - upper (%)</b> Not applicable.
<b>Color</b> Various.	<b>Explosive limit - lower (%)</b> Not applicable.
<b>Odor</b> Low to no odor.	<b>Explosive limit - upper (%)</b> Not applicable.
<b>Odor threshold</b> Not applicable.	<b>Vapor pressure</b> Not applicable.
<b>pH</b> Not applicable.	<b>Vapor density</b> Not applicable.
<b>Melting point/freezing point</b> 1315.56 - 1537.78 °C (base metal (steel))	<b>Relative density</b> 7 - 8 (H²O = 1)
<b>Specific Gravity</b> 7.86	<b>Partition coefficient (n-octanol/water)</b> Not applicable.
<b>Initial boiling point and boiling range</b> Not applicable.	<b>Auto-ignition temperature</b> Not applicable.
<b>Flash point</b> Not applicable.	<b>Decomposition temperature</b> Not applicable.
<b>Evaporation rate</b> Not applicable.	<b>Viscosity</b> Not applicable.
<b>Flammability (solid, gas)</b> Not applicable.	<b>Other information</b>
<b>Solubility(ies)</b> Not soluble in water.	<b>Bulk density</b> 7688.8 - 8009.2 kg/m³
	<b>VOC (Weight %)</b> 0 %



10. STABILITY AND  
REACTIVITY

Reactivity

The product is stable & non reactive under normal conditions of use, storage & transport.

Chemical stability

Material is stable under normal conditions.

Possibility of hazardous reactions

Hazardous polymerization does not occur.

Conditions to avoid

Contact with incompatible materials.

Incompatible materials

Strong oxidizing agents.

Hazardous decomposition products

No hazardous decomposition products are known.

11. TOXICOLOGICAL  
INFORMATION

Information on likely routes of exposure

Ingestion

Not likely, due to the form of the product.

Inhalation

Not likely, due to the form of the product.

Skin contact

Edges and notches (where present) may be sharp and can cut skin. Under normal conditions of intended use, this product does not pose a skin hazard.

Eyes contact

Contact with sharp edges and notches (where present) may cut the eye and cause eye damage.

Symptoms related to the physical, chemical and toxicological characteristics

Sharp edges and notches (where present) may cause cuts and irritation.

Information on toxicological effects

Acute toxicity

None.

Skin corrosion/irritation

Edges and notches (where present) may be sharp and can cut skin.

Serious eye damage/eye irritation

Contact with sharp edges and notches (where present) may cut the eye and cause eye damage.

Respiratory or skin sensitization

Respiratory sensitization

No data available.

Skin sensitization

This product is not expected to cause skin sensitization.

Germ cell mutagenicity

Not expected to be mutagenic.

Carcinogenicity

Not expected.

Reproductive toxicity

Not expected to be a reproductive hazard.

Specific target organ toxicity-single exposure

No data available, but none expected.

Specific target organ toxicity -repeated exposure

No data available, but none expected.

Aspiration hazard

Due to the physical form of the product it is not an aspiration hazard.

Further information

No other specific acute or chronic health impact noted.

12. ECOLOGICAL  
INFORMATION

Ecotoxicity

Not expected to be harmful to aquatic organisms.

Persistence and degradability

No data is available on the degradability of this product.

Bioaccumulative potential

Bioaccumulation is not expected.

Mobility in soil

Not available.

Other adverse effects

No other adverse environmental effects (e.g. ozone depletion, photochemical ozone creation potential, endocrine disruption, global warming potential) are expected from this component.

13. DISPOSAL  
CONSIDERATIONS

Disposal instruction

Dispose in accordance with applicable federal, state, and local regulations.

Recycle responsibly.

Local disposal regulations

Dispose of in accordance with local regulations.

Hazardous waste code

Not regulated.

Waste from residues / unused products

Dispose of in accordance with local regulations.

Contaminated packaging

Dispose of in accordance with local regulations.

14. TRANSPORT  
INFORMATION

DOT

Not regulated as dangerous goods.

IATA

Not regulated as a dangerous good.

IMDG

Not regulated as a dangerous good.

Transport in bulk according to Annex II of MARPOL 73/78 and the IBC Code

Not applicable.

15. REGULATORY  
INFORMATION

Saudi Arabian Inventory of Chemical Substance:

CAS #	7440-66-6	Zinc
CAS #	7429-90-5	Aluminium
CAS #	7439-89-6	Iron

16. OTHER INFORMATION,  
INCLUDING DATE OF  
PREPARATION OR  
LAST REVISION

Issue date

1-July-2018

Revision date

1-December-2022

Version #

02

Further information

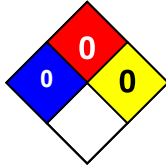
NFPA Ratings:

Health: 0

Flammability: 0

Physical hazard: 0

Hazard Scale: 0 = Minimal 1 = Slight 2 = Moderate 3 = Serious 4 = Severe



List of abbreviations Disclaimer

NFPA: National Fire Protection Association.

This information is provided without warranty. The information is believed to be correct.

This information should be used to make an independent determination of the methods to safeguard workers and the environment





#### **FACTORY OF USG MIDDLE EAST LTD. CO.**

7410 (Wasil), Street #23, Cross 76  
2nd Industrial City, Dammam 34326-4201  
Kingdom of Saudi Arabia

#### **CUSTOMER SERVICE**

t +966 13 812 0995  
f +966 13 812 1029  
info@usgme.com  
www.usgme.com

#### **WEBSITE**

[www.usgme.com](http://www.usgme.com)



#### **WHATSAPP**

+966 92 003 5672



**SEE US ON LINKEDIN**  
[/usgme](#)



**FIND US ON FACEBOOK**  
[/usgme](#)



**FOLLOW US ON INSTAGRAM**  
[/usg\\_me](#)



**FOLLOW US ON TWITTER**  
[/usg\\_me](#)



**SEE US ON YOUTUBE**  
[/USG Middle East](#)



**MESSAGE US ON WHATSAPP**  
[/+966 92 003 5672](#)

**USG ME**   
INNOVATIVE SOLUTIONS. EVERYTIME.