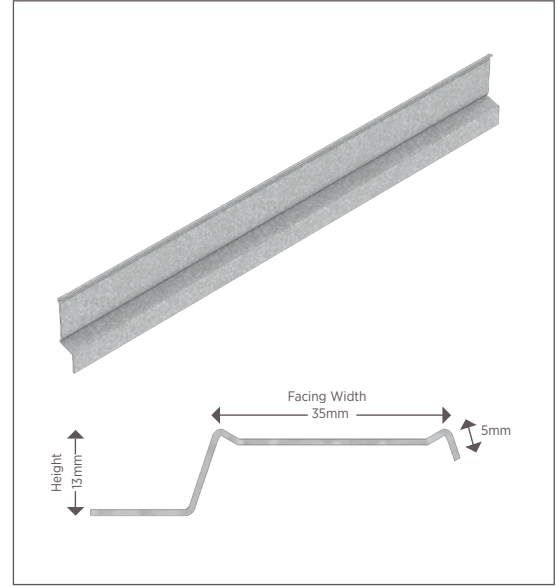
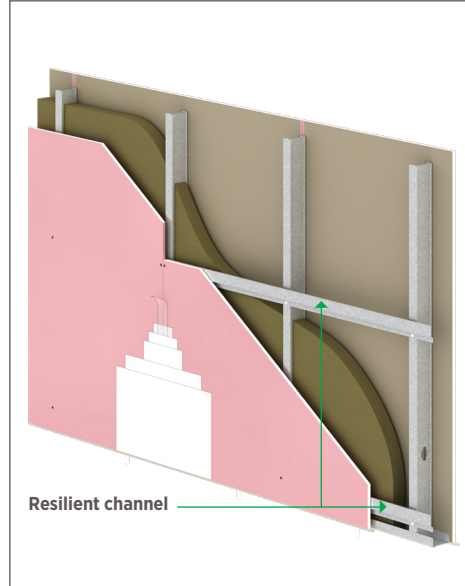


RESILIENT CHANNEL

RC351306

| Resilient Channel | Facing Width | Height | Thickness |
|-------------------|--------------|--------|-----------|
|-------------------|--------------|--------|-----------|



DESCRIPTION

- Used in Drywall framing applications to improve the STC rate in Wall Partition.
- The spacing between the horizontal channels should be 600mm, with a distance of 50mm from the bottom and a maximum of 150mm from the top.

MATERIAL PROPERTIES

- **Thickness:** 0.6mm
- **Height:** 13mm
- **Facing Width:** 35mm
- **Length:** 3000mm
- Galvanized steel G40-G90 Zinc Coating

STEEL GRADE

Yield stress, Fy 33 ksi Ultimate

ASTM & CODE STANDARDS

- Resilient Channels are produced to meet ASTM C645 and C955
- Galvanized sheet steel meets requirements of ASTM A-653
- For installation & storage information refer to ASTM C1007 & C754

GREEN BENEFITS

- LEED Credit MR 2 – USG products are manufactured from cold-formed steel. Steel is 100% recyclable, which helps divert debris from the waste stream.
- LEED Credit MR 4 – USG’s steel products have a minimum of 25.5% post-consumer recycled content, and 6.8% pre-consumer.

REFERENCES

For further health and safety instructions, refer to the Safety Data Sheet (SDS) for this product, available from your USG Middle East sales office or USGme.com

Disclaimer:
Information contained in this document is subject to change without prior notice due to our ongoing product development. We recommend referring to the website usgme.com for the most up-to-date and accurate product information.

©2024 Factory of USG Middle East LTD. Co. All rights reserved.