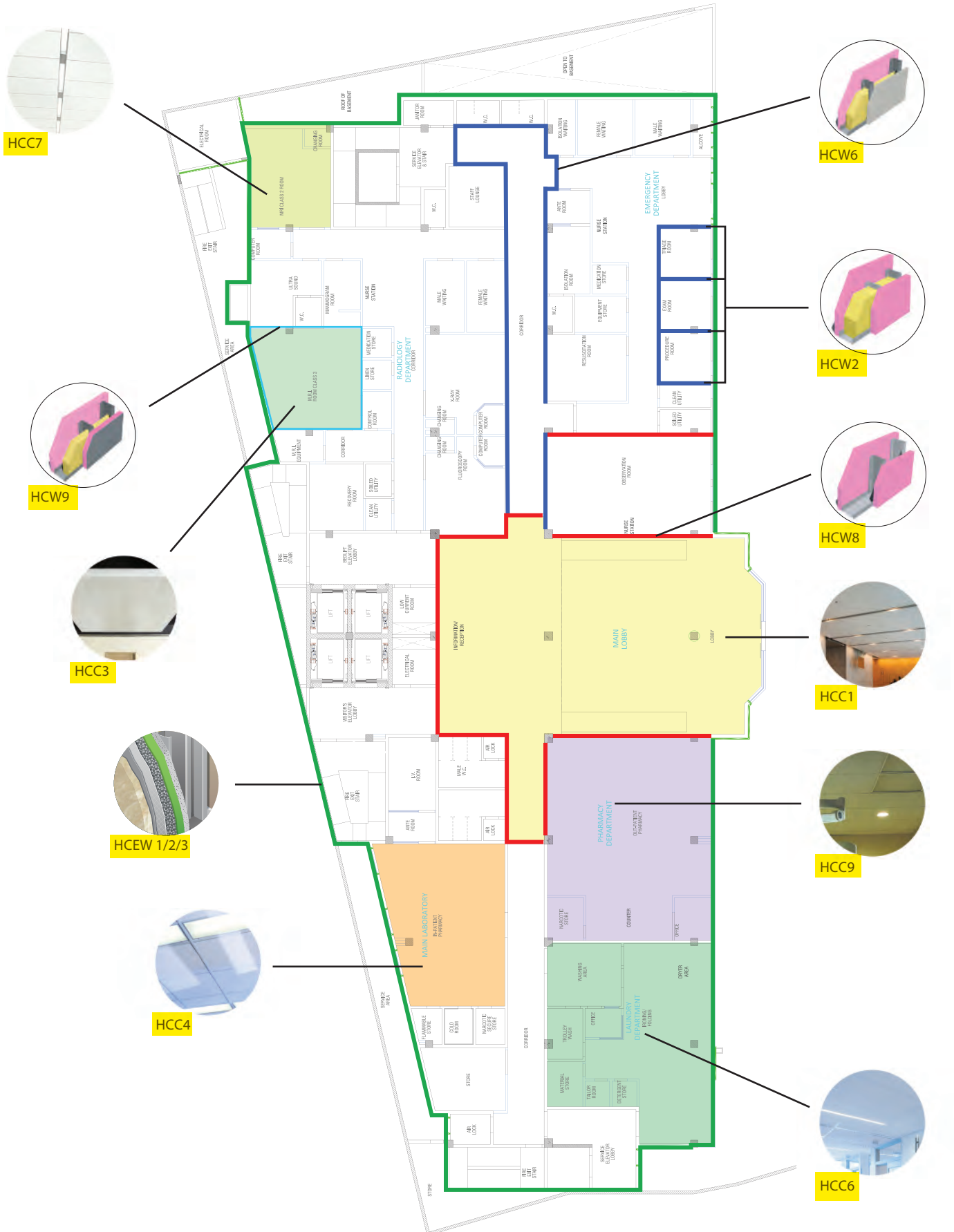
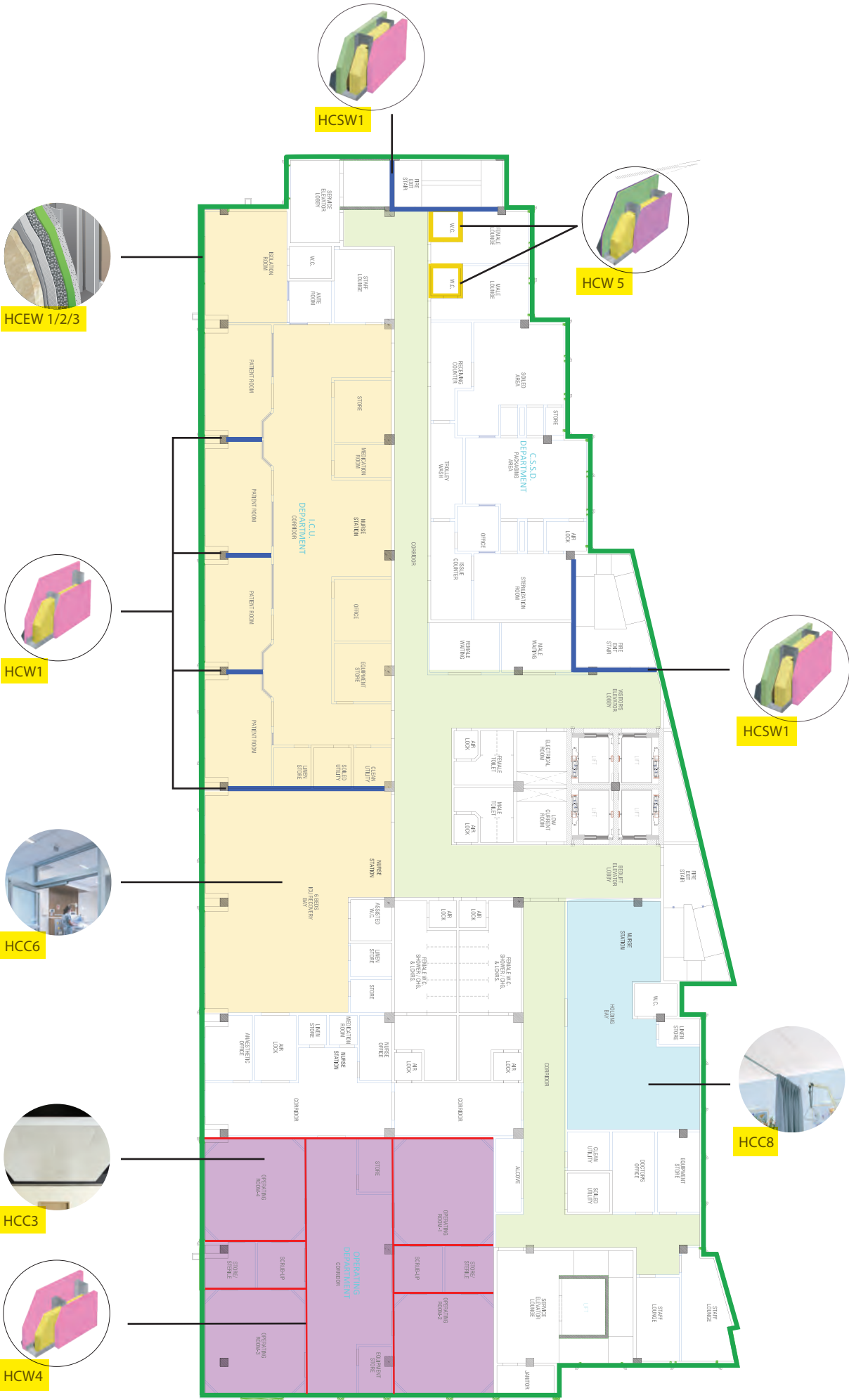
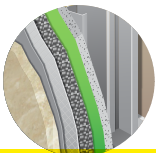


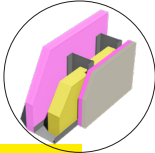
TYPICAL HOSPITAL FLOOR PLAN







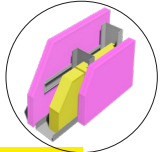
HCEW 1/2/3



HCW3



HCC7



HCW7



HCC6



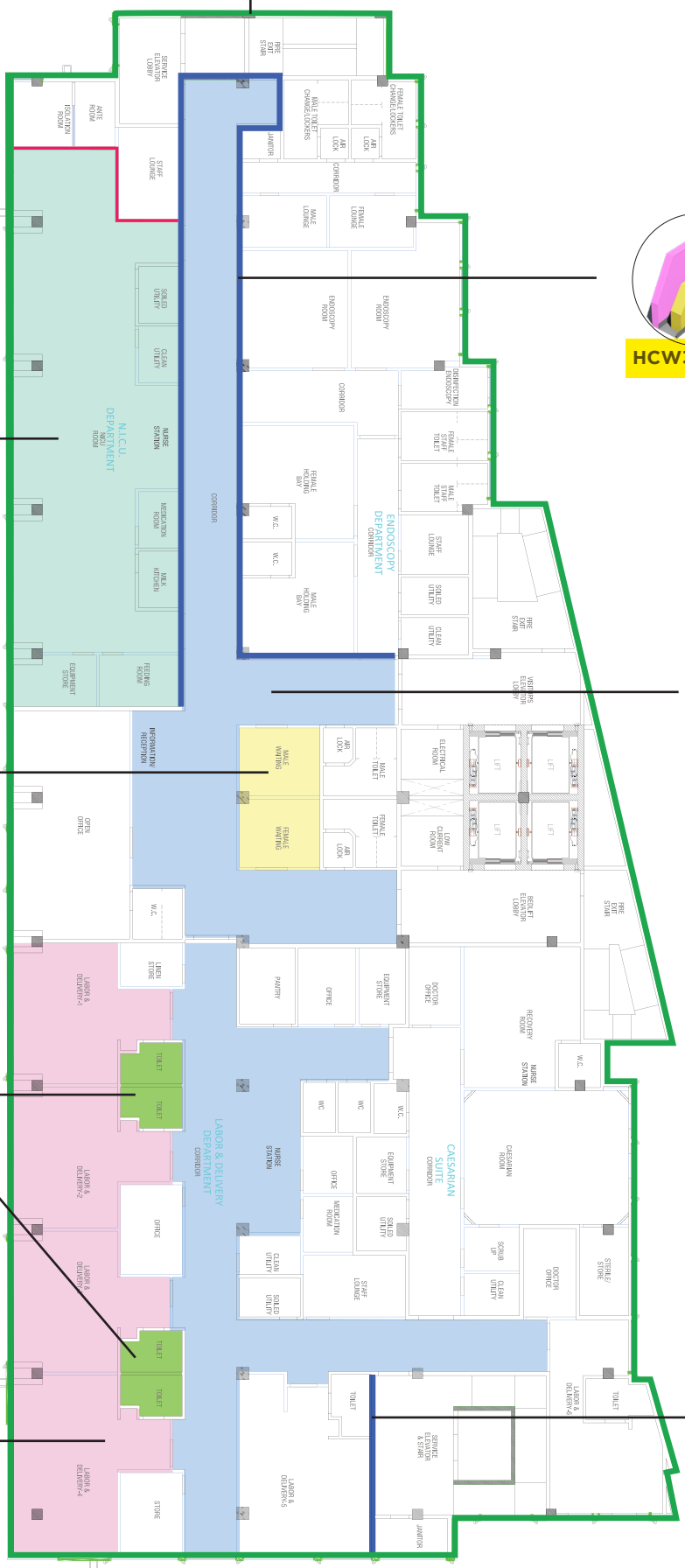
HCC5



HCC2

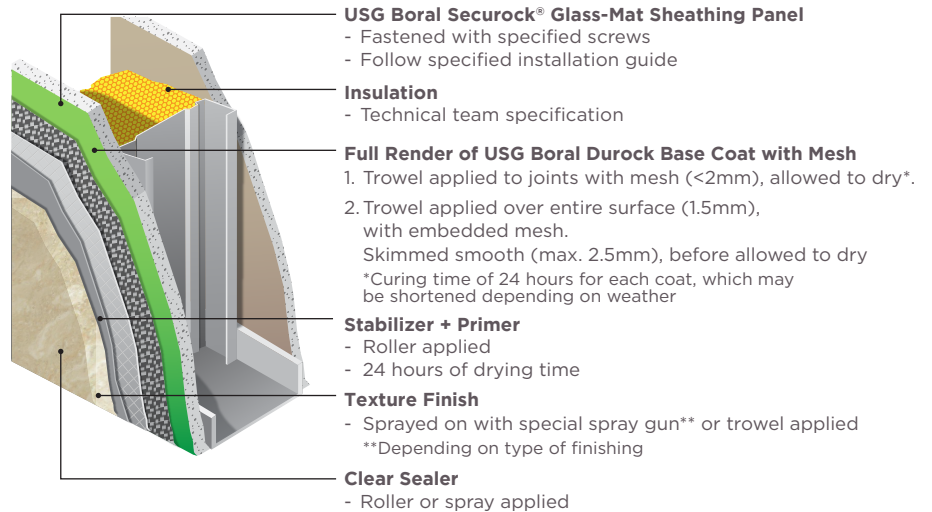


HCC7



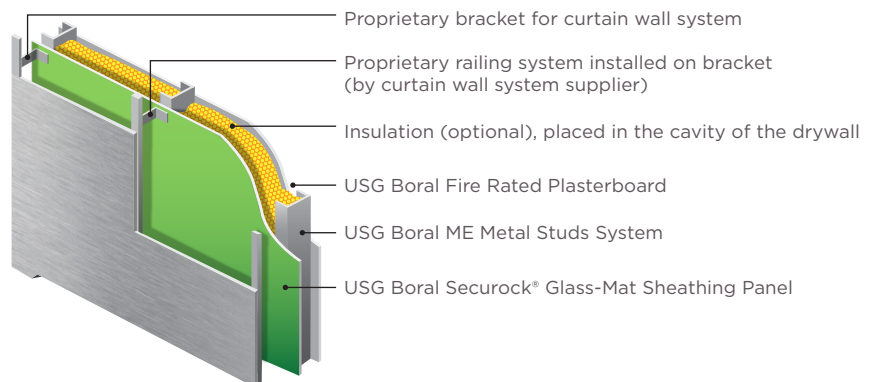
HCEW1

DIRECT-APPLIED EXTERIOR FINISHING SYSTEM



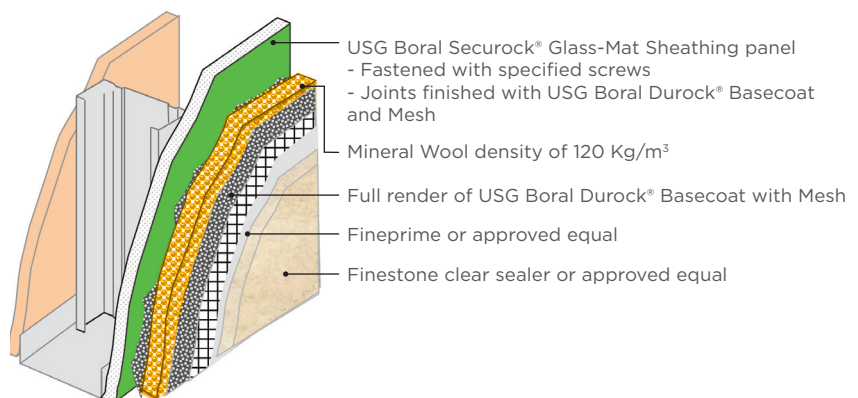
HCEW2

METAL PANEL FACADE FINISHING SYSTEM



HCEW3

EIFS SYSTEMS (EPS, PIR, NEO INSULATION BOARD)

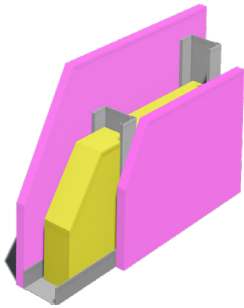


HCW1

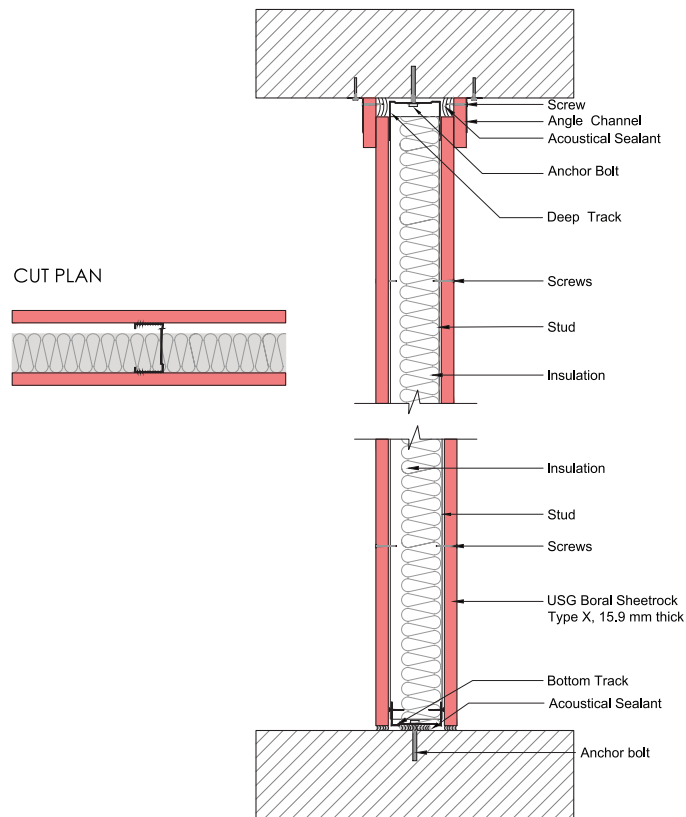
PATIENT ROOM TO PATIENT ROOM (WALL-SAME FLOOR)

EXAM ROOM TO EXAM ROOM (WITH ELECTRONIC MASKING)

1 HOUR FIRE RATED
ASSEMBLY UL U 419
47 dB



Fire Rating	1 hour
Acoustic Performance	47 dB
System Thickness	96mm



WALL CONSTRUCTION

Gypsum Board : One layer of 5/8" (15.9mm) thick USG Boral Sheetrock® brand Type X Gypsum Board applied horizontally or vertically

Steel Studs : 62.5mm C-Stud spaced at 600mm OC

Steel Tracks : Top Track: 64x50mm deep U-track
Bottom Track: 64x30mm U-track

Insulation: 50mm thick Mineral Wool insulation (Density 14 kg/m³)

Gypsum Board : One layer of 5/8" (15.9mm) thick USG Boral Sheetrock® brand Type X Gypsum Board applied horizontally or vertically

Joint Compound : USG Boral Sheetrock® Brand All-Purpose Joint Compound

Acoustical Sealant: USG Sheetrock® Brand Acoustical Sealant

Tapes: USG Sheetrock® Brand Paper Tape

Screws : First layer: 4.2 x 32mm Screw, Bugle Head - Self Drilling

Level 5 finish : Sheetrock® Tuff-Hide® Primer-Surfacer

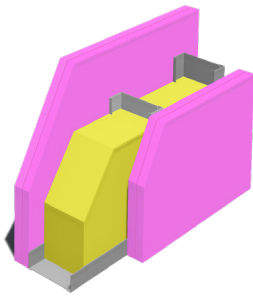
Steel Studs and Steel Tracks Thicknesses as per design requirements.

Deflection head as per design requirements.

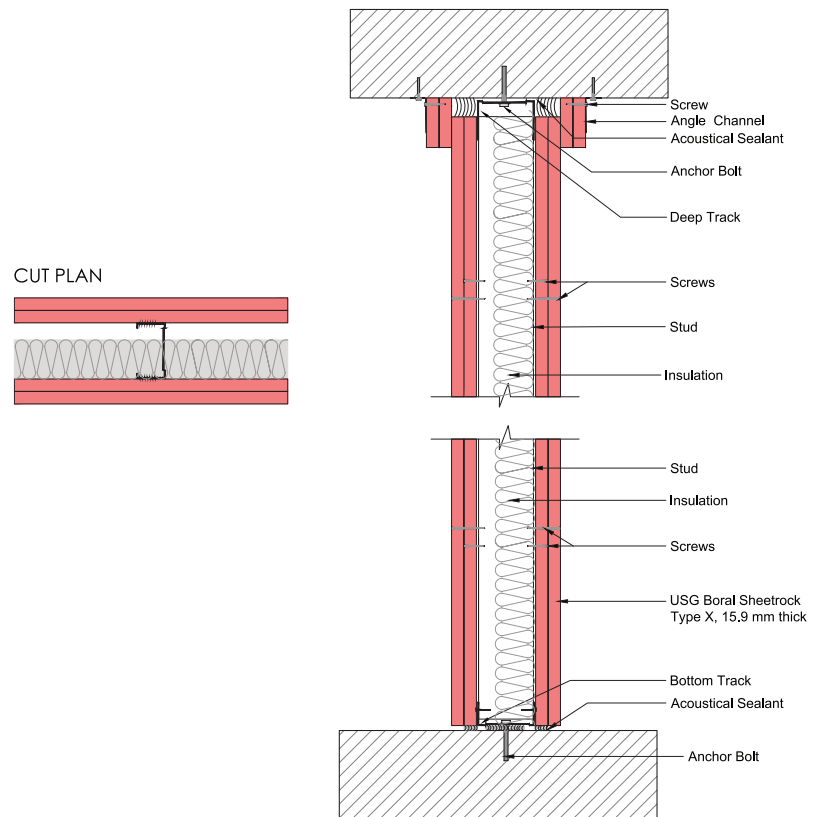
HCW2

PATIENT ROOM TO PATIENT ROOM (FLOOR-TO-FLOOR) EXAM ROOM TO EXAM ROOM (NO ELECTRONIC MASKING)

2 HOURS FIRE RATED
ASSEMBLY UL U 419
56 dB



Fire Rating	2 hours
Acoustic Performance	56 dB
System Thickness	136mm



WALL CONSTRUCTION

Gypsum Board : Two layers of 5/8" (15.9mm) thick USG Boral Sheetrock® brand Type X Gypsum Board applied horizontally or vertically

Steel Studs : 70.5mm C-Stud spaced at 600mm OC

Steel Tracks : Top Track: 72x50mm deep U-track
Bottom Track: 72x30mm U-track

Insulation : 50 mm Mineral Wool (Density 14 kg/m³)

Gypsum Board : Two layers of 5/8" (15.9mm) thick USG Boral Sheetrock® brand Type X gypsum board applied horizontally or vertically

Joint Compound : USG Boral Sheetrock® Brand All-Purpose Joint Compound

Acoustical Sealant : USG Sheetrock® Brand Acoustical Sealant

Tapes : USG Sheetrock® Brand Paper Tape

Screws : First layer: 4.2 x 32mm Screw, Bugle Head – Self Drilling
Second Layer : 4.2 x 50mm Screw, Bugle Head – Self Drilling

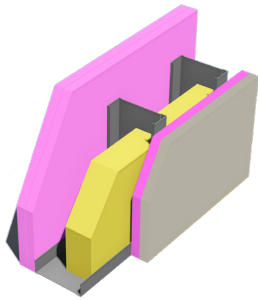
Level 5 finish : Sheetrock® Tuff-Hide® Primer-Surfacer

Steel Studs and Steel Tracks Thicknesses as per design requirements.

Deflection head as per design requirements.

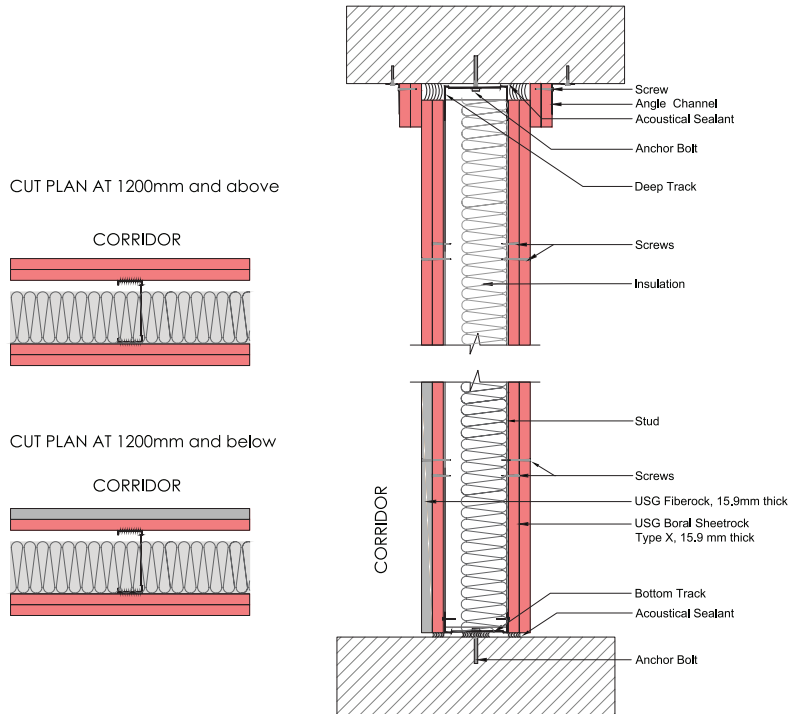
HCW3

**2 HOURS FIRE RATED
ASSEMBLY UL U 419
55 dB**



NICU TO CORRIDOR

Fire Rating	2 hours
Acoustic Performance	55 dB
System Thickness	156mm



WALL CONSTRUCTION

Inner Layer : One layer of 5/8" (15.9mm) thick USG Boral Sheetrock® brand Type X gypsum board applied horizontally or vertically

Outer Layer : 1 layer of USG Fiberock® 5/8" (15.9mm) thick board (Impact resistant) applied horizontally on the bottom of corridor's side 1200 mm from floor

Gypsum Board above Fiberock®: One Layer of 5/8" (15.9mm) thick USG Boral Sheetrock® brand Type X gypsum board applied horizontally or vertically

Steel Studs : 90.5mm C-Stud spaced at 600mm OC

Steel Track : Top Track: 92x50mm deep U-track
Bottom Track: 92x30mm U-track

Insulation : 75mm thick Mineral Wool insulation (Density 14 kg/m³)

Gypsum Board : Two layers of 5/8" (15.9mm) thick USG Boral Sheetrock® brand Type X gypsum board applied horizontally or vertically

Joint Compound : USG Boral Sheetrock® Brand All-Purpose Joint Compound for Type X Gypsum Board and USG Durabond® for Fiberock® joint finishing

Acoustical Sealant : USG Sheetrock® Brand Acoustical Sealant

Tapes : USG Sheetrock® Brand Paper Tape

Screws : First layer: 4.2 x 32mm Screw, Bugle Head - Self Drilling
Second Layer : 4.2 x 50mm Screw, Bugle Head - Self Drilling

Level 5 finish : Sheetrock® Tuff-Hide® Primer-Surfacer

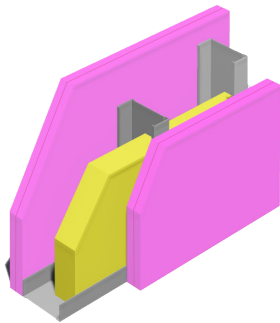
Steel Studs and Steel Tracks Thicknesses as per design requirements.

Deflection head as per design requirements.

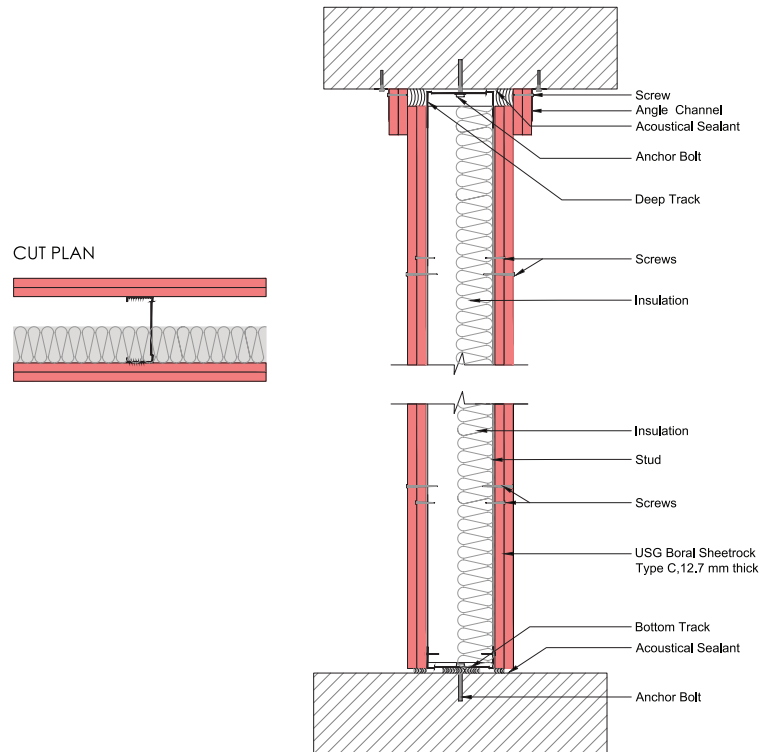
HCW4

TREATMENT ROOM TO TREATMENT ROOM OPERATING ROOM TO OPERATING ROOM

**2 HOURS FIRE RATED
ASSEMBLY UL U 419
55 dB**



Fire Rating	2 hours
Acoustic Performance	55 dB
System Thickness	143mm



WALL CONSTRUCTION

Gypsum Board : Two layers of 1/2" (12.7mm) USG Boral Sheetrock® brand Type C gypsum board applied horizontally or vertically

Steel Studs : 90.5mm C-Stud spaced at 600mm OC

Steel Tracks : Top Track: 92x50mm deep U-track
Bottom Track: 92x30mm U-track

Insulation : 50mm thick Mineral Wool insulation (Density 14 kg/m³)

Gypsum Board : Two layers of 1/2" (12.7mm) USG Boral Sheetrock® brand Type C gypsum board applied horizontally or vertically

Joint Compound : USG Boral Sheetrock® Brand All-Purpose Joint Compound

Acoustical Sealant : USG Sheetrock® Brand Acoustical Sealant Tapes: USG Sheetrock® Brand Paper Tape

Screws : First layer: 4.2 x 32mm Screw, Bugle Head - Self Drilling
Second Layer : 4.2 x 50mm Screw, Bugle Head - Self Drilling

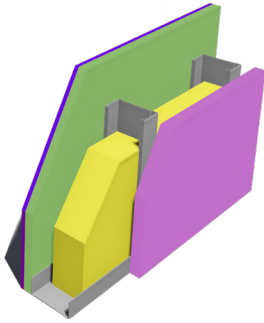
Level 5 finish : Sheetrock® Tuff-Hide® Primer-Surfacer

Steel Studs and Steel Tracks Thicknesses as per design requirements.

Deflection head as per design requirements.

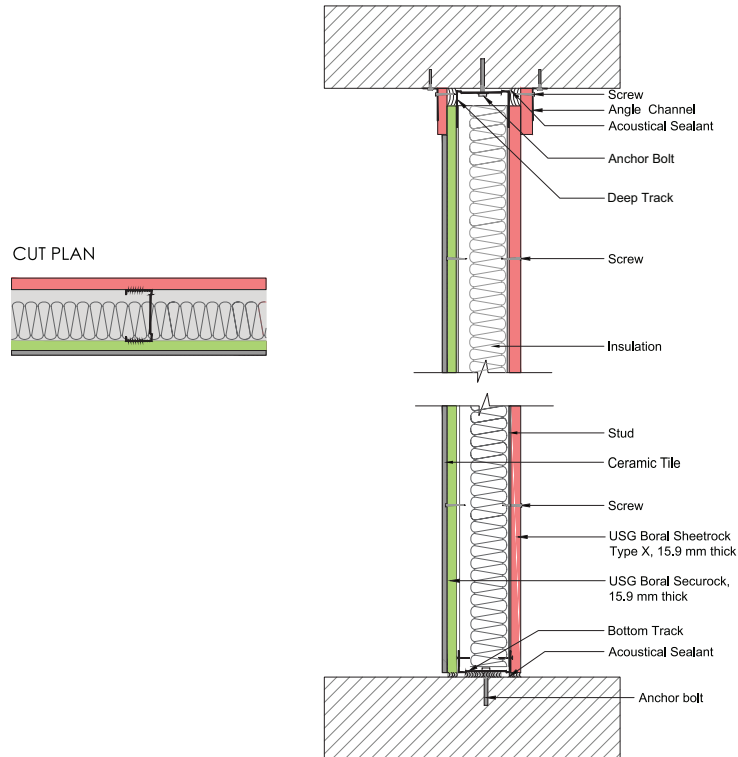
HCW5

**1 HOUR FIRE RATED
ASSEMBLY UL U 419
50 dB**



TOILET ROOM TO PUBLIC SPACE

Fire Rating	1 hour
Acoustic Performance	50 dB
System Thickness	110mm



WALL CONSTRUCTION

Gypsum Board : One layer of 5/8" (15.9mm) thick USG Boral Sheetrock® brand Type X gypsum board applied horizontally or vertically¹

Steel Studs : 70.5mm C-stud spaced at 600mm o.c

Steel Track : Top Track: 72x50mm deep U-track
Bottom Track: 72x30mm U-track

Insulation: 50mm thick Mineral Wool insulation (Density 14 kg/m³)

Substrate Layer: One layer of 5/8" (15.9mm) USG Boral Securock® brand Type X with 6.4mm thick Ceramic Tile on opposite side.

Joint Compound : USG Boral Sheetrock® Brand All-Purpose Joint Compound

Base Coat : USG Boral Durock® Base Coat

Acoustical Sealant : USG Sheetrock® Brand Acoustical Sealant

Tapes : USG Sheetrock® Brand Paper Tape & USG 2" Interior Durock® tape

Screws : Gypsum layer: 4.2 x 32mm Screw, Bugle Head - Self Drilling & (1-1/4") 32mm Durock® Screw

Level 5 finish : Sheetrock® Tuff-Hide® Primer-Surfacer

¹**Additional board of 5/8 (15.9mm) thick USG Boral Sheetrock® brand Type X gypsum is required on the public space side to achieve the severe duty performance.**

Steel Studs and Steel Tracks Thicknesses as per design requirements.

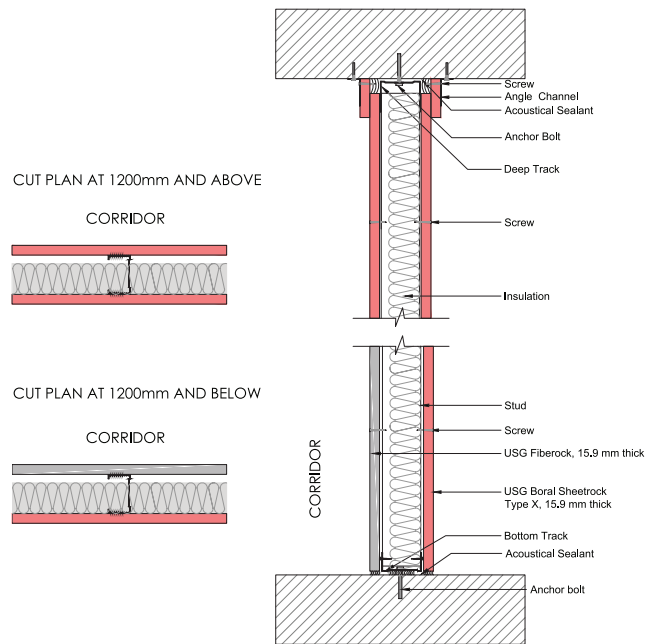
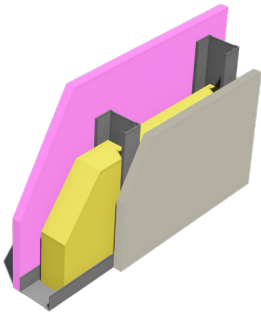
Deflection head as per design requirements.

HCW6

PATIENT ROOM TO CORRIDOR (WITH ENTRANCE) CONSULTATION ROOM TO CORRIDOR (WITH ENTRANCE)

1 HOUR FIRE RATED
ASSEMBLY UL U 419
47 dB

Fire Rating	1 hour
Acoustic Performance	47 dB
System Thickness	96mm



WALL CONSTRUCTION

Outer Layer : One layer of USG Fiberock® 5/8" (15.9mm) thick board (Impact resistant) applied horizontally on the bottom of corridor's side 1200mm from floor

Gypsum Board above Fiberock® : One layer of 5/8" (15.9mm) thick USG Boral Sheetrock® brand Type X gypsum board applied horizontally or vertically¹

Steel Studs : 62.5mm C-Stud spaced at 600mm OC

Steel Track : Top Track: 64x50mm deep U-track
Bottom Track: 64x30mm U-track

Insulation : 50mm thick Mineral Wool insulation (Density 14 kg/m³)

Gypsum Board : One layer of 5/8" (15.9mm) thick USG Boral Sheetrock® brand Type X gypsum board applied horizontally or vertically¹

Joint Compound : USG Boral Sheetrock® Brand All-Purpose Joint Compound for Type X Gypsum Board and USG Durabond® for Fiberock® joint finishing

Acoustical Sealant : USG Sheetrock® Brand Acoustical Sealant

Tapes : USG Sheetrock® Brand Paper Tape

Screws : First layer: 4.2 x 32mm Screw, Bugle Head - Self Drilling

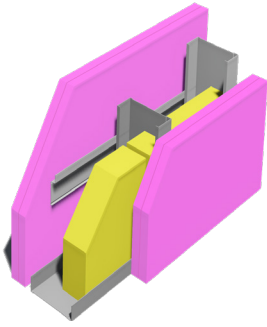
Level 5 finish : Sheetrock® Tuff-Hide® Primer-Surfacer

¹**Additional board of 5/8 (15.9mm) thick USG Boral Sheetrock® brand Type X gypsum is required on the corridor side to achieve the severe duty performance. Steel Studs and Steel Tracks Thicknesses as per design requirements.**

Deflection head as per design requirements.

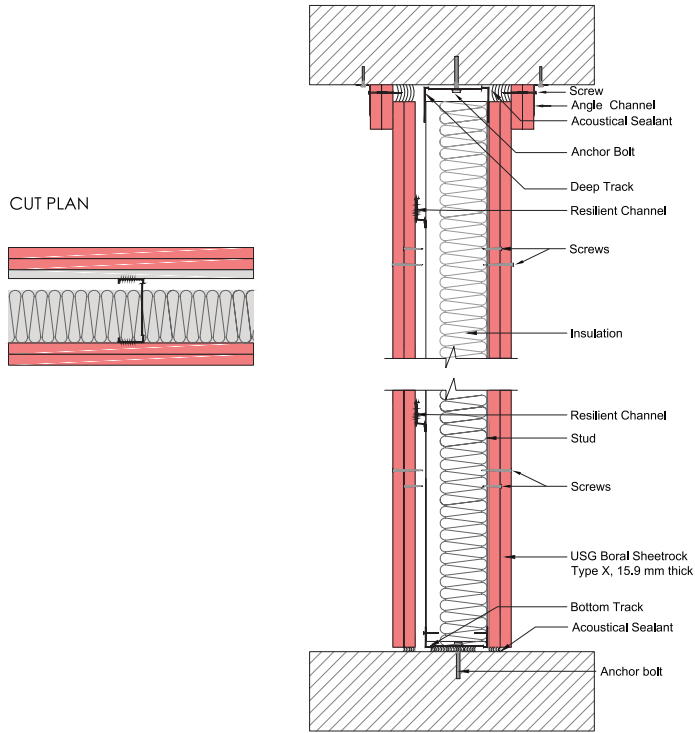
HCW7

**2 HOURS FIRE RATED
ASSEMBLY
61 dB**



PATIENT ROOM TO SERVICE AREA

Fire Rating	2 hours
Acoustic Performance	61 dB
System Thickness	169mm



WALL CONSTRUCTION

Gypsum Board : Two layers of 5/8" (15.9mm) thick USG Boral Sheetrock® brand Type X gypsum board applied horizontally or vertically

Steel Studs : 90.5mm thick C-Stud spaced at 600mm OC

Steel Track : : Top Track: 92x50mm deep U-track
Bottom Track: 92x30mm U-track

Insulation : 75mm thick mineral wool insulation Density (14 kg/m³)

Resilient Channel : 13mm deep Resilient channel spaced at 600mm horizontally

Gypsum Board : Two layers of 5/8" (15.9mm) thick USG Boral Sheetrock® brand Type X gypsum board applied horizontally or vertically

Joint Compound : USG Boral Sheetrock® Brand All-Purpose Joint Compound

Acoustical Sealant : USG Sheetrock® Brand Acoustical Sealant

Tapes : USG Sheetrock® Brand Paper Tape

Screws: First layer: 4.2 x 32mm Screw, Bugle Head – Self Drilling
Second Layer : 4.2 x 50mm Screw, Bugle Head – Self Drilling

Level 5 finish : Sheetrock® Tuff-Hide® Primer-Surfacer

Steel Studs and Steel Tracks Thicknesses as per design requirements.

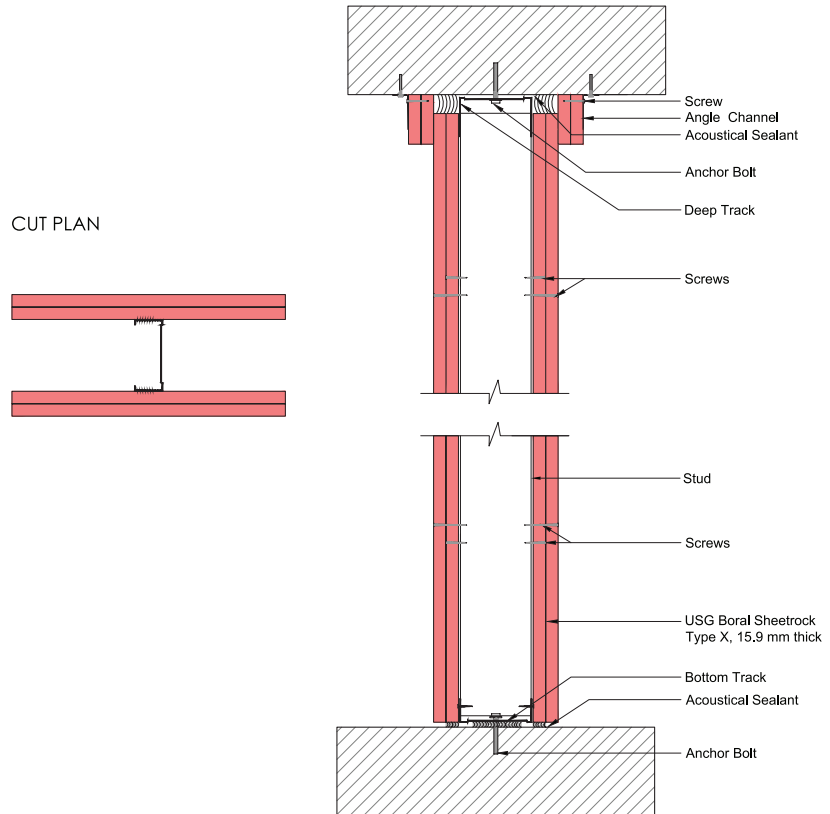
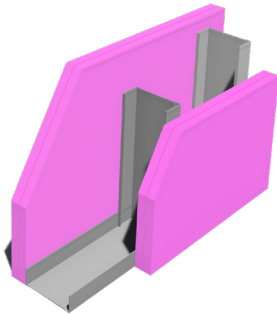
Deflection head as per design requirements.

HCW8

OUT-PATIENT/CONSULTATION ROOM TO PUBLIC SPACE

2 HOURS FIRE RATED
ASSEMBLY UL U 419
50 dB

Fire Rating	2 hours
Acoustic Performance	50 dB
System Thickness	156mm



WALL CONSTRUCTION

Gypsum Board : Two layers of 5/8" (15.9mm) thick USG Boral Sheetrock® brand Type X gypsum board applied horizontally or vertically

Steel Studs : 90.5mm thick C-Stud spaced at 600mm OC

Steel Track : : Top Track: 92x50mm deep U-track
Bottom Track: 92x30mm U-track

Gypsum Board : Two layers of 5/8" (15.9mm) thick USG Boral Sheetrock® brand Type X gypsum board applied horizontally or vertically

Joint Compound : USG Boral Sheetrock® Brand All-Purpose Joint Compound

Acoustical Sealant : USG Sheetrock® Brand Acoustical Sealant

Tapes : USG Sheetrock® Brand Paper Tape

Screws : First layer: 4.2 x 32mm Screw, Bugle Head – Self Drilling
Second Layer: 4.2 x 50mm Screw, Bugle Head – Self Tapping

Level 5 finish : Sheetrock® Tuff-Hide® Primer-Surfacer

Steel Studs and Steel Tracks Thicknesses as per design requirements.

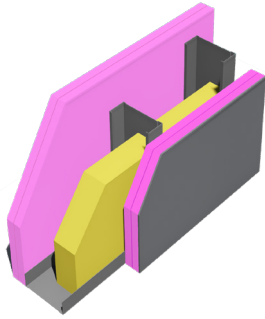
Deflection head as per design requirements.

HCW9

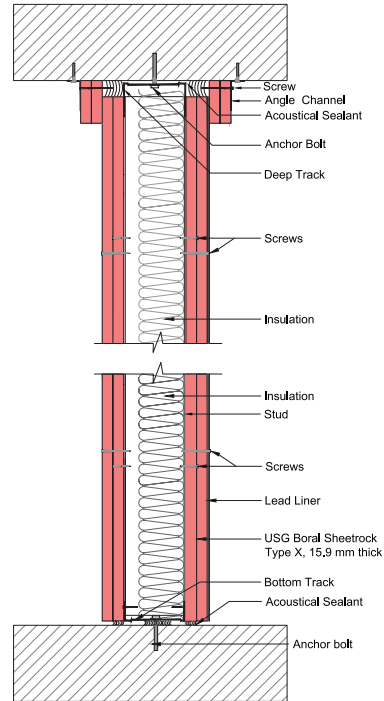
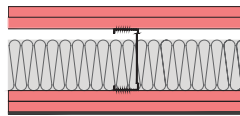
OPERATING ROOM TO MRI ROOM PATIENT ROOM TO MRI ROOM

**2 HOURS FIRE RATED
ASSEMBLY UL BE U 430
60 dB**

Fire Rating	2 hours
Acoustic Performance	60 dB
System Thickness	158mm



CUT PLAN



WALL CONSTRUCTION

Gypsum Board : Two layers of 5/8" (15.9mm) thick USG Boral Sheetrock® brand Type X gypsum board applied horizontally or vertically

Steel Studs : 90.5mm C-Stud spaced at 600mm OC

Steel Track : : Top Track: 92x50mm deep U-track
Bottom Track: 92x30mm U-track

Insulation: 75mm thick Mineral Wool insulation (Density 14kg /m³)

Gypsum Board : 1 layer of 5/8" (15.9mm) thick USG Boral Sheetrock® brand Type X gypsum board applied horizontally or vertically

Lead Lined Gypsum Board- RAY-BAR ENGINEERING CORP : Type RBLBG using 5/8" (15.9mm) USG Sheetrock® type X board to be used with Lead Batten Strips or Lead Discs or Tabs as per UL BE U430. Minimum of lead thickness 2.5mm

Joint Compound : USG Boral Sheetrock® Brand All-Purpose Joint Compound

Acoustical Sealant : USG Sheetrock® Brand Acoustical Sealant

Tapes : USG Sheetrock® Brand Paper Tape

Screws : First layer: 4.2 x 32mm Screw, Bugle Head – Self Drilling
Second Layer: 4.2 x 50mm Screw, Bugle Head – Self Drilling

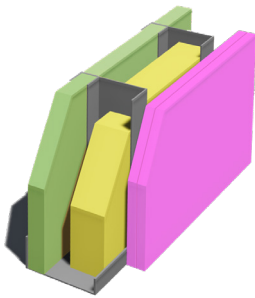
Level 5 finish : Sheetrock® Tuff-Hide® Primer-Surfacer

Steel Studs and Steel Tracks Thicknesses as per design requirements.

Deflection head as per design requirements.

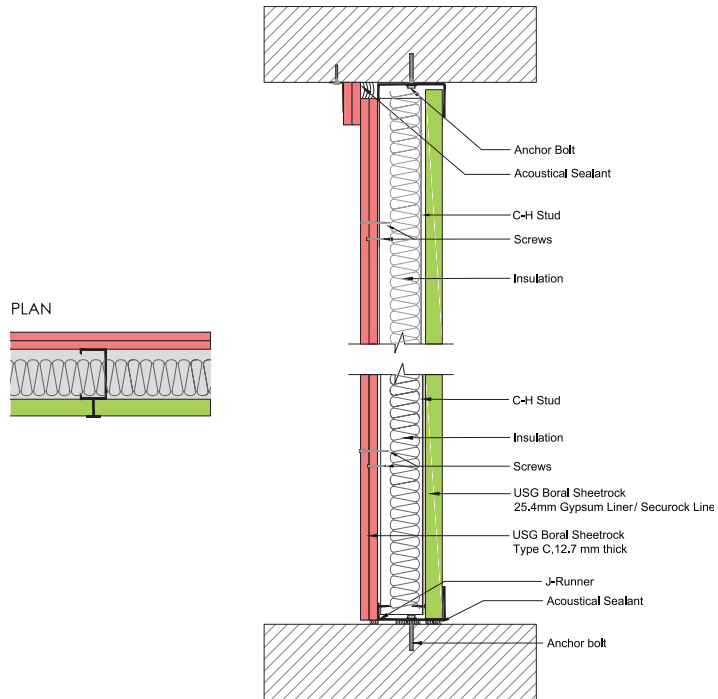
HCSW1

**2 HOURS FIRE RATED
ASSEMBLY UL U 415
50 dB**



SHAFTWALL SYSTEM

Fire Rating	2 hours
Acoustic Performance	50 dB
System Thickness	127mm



WALL CONSTRUCTION

- Gypsum Board :** Two layers of 1/2" (12.7mm) thick USG Boral Sheetrock® brand Type C gypsum board applied horizontally or vertically
- CH-Stud :** 4" (101.6mm) x 0.9mm thick CH-Stud spaced at 600mm OC
- E-Stud :** 4" (101.6mm) x 0.9 mm thick E-Stud installed at corners
- J-Runner :** 4" (101.6mm)x0.9 mm thick J-Runner installed at top and bottom
- Insulation :** 75mm thick Mineral Wool insulation (Density 14kg /m³)
- Gypsum Board :** One layer of 1" (25.4mm) thick USG Boral Sheetrock® brand Gypsum Liner or Securock Liner® friction fit
- Joint Compound :** USG Boral Sheetrock® Brand All-Purpose Joint Compound
- Acoustical Sealant:** USG Sheetrock® Brand Acoustical Sealant
- Tapes :** USG Sheetrock® Brand Paper Tape
- Screws :** First layer: 4.2 x 32mm Screw, Bugle Head - Self Drilling
Second Layer: 4.2 x 50mm Screw, Bugle Head - Self Drilling
- Level 5 finish :** Sheetrock® Tuff-Hide® Primer-Surfacer

Deflection head as per design requirements.

SHAFTWALL STEEL COMPONENTS

CH Stud Sizes	J Runner Size	E Stud Sizes
63.5MM, 101.6MM, 152.4MM	63.5MM, 101.6MM, 152.4MM	63.5MM, 101.6MM, 152.4MM

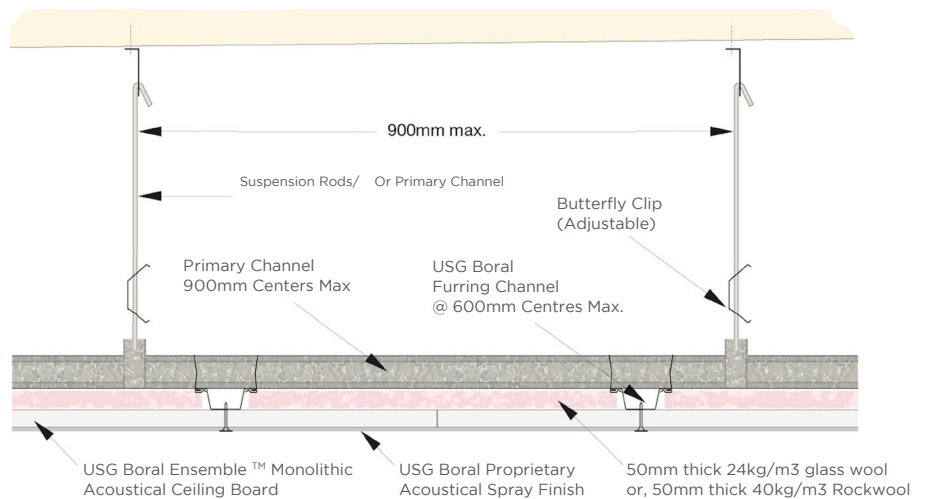
HCC1

ENSEMBLE™ MONOLITHIC ACOUSTICAL CEILING SYSTEM

DESCRIPTION

• **USG Boral Ensemble™ Monolithic Acoustical Ceiling System** is a lightweight, non-combustible, high acoustic seamless ceiling system consist of USG Boral Ensemble™ Brand Panels 12.5mm thick screw fixed to framing system and finished using USG Boral Ensemble Spray Applied Finish.

• USG Boral Ensemble™ Brand Panels 12.5mm thick



CEILING CONSTRUCTION

Lining: USG Boral Ensemble™ Brand Panels 12.5mm thick

Framing: USG Boral Primary Channel
USG Boral Furring Channel
USG Boral Wire Connecting Clip
USG Boral Primary Channel Bracket
USG Boral Butterfly Clip
USG Boral Suspension Rod

Insulation: as required

Fastener: 25mm Type 'S' Needle Point Screws

Joint Tape: USG Boral Paper Tape 50mm width

Jointing Compound: 1st and 2nd Coat : SHEETROCK® All Purpose Joint Compound or USG Boral Premium Premix
3rd Coat : SHEETROCK® Lightweight All-Purpose Joint Compound

Final Finish: USG Boral Ensemble Spray Applied Finish

To ensure the performance of this system meets the USG Boral Warranty requirements, only USG Boral products are to be used and installed correctly in accordance to USG Boral specifications and recommendations.

APPLICATION AS PER 2018 FGI GUIDELINES

- Central Sterile Supply
- Class 2 MRI & Imaging Rooms
- Class 3 MRI & Imaging Rooms
- Clean Corridors
- Decontamination Rooms
- Endoscope Processing Rooms
- Hazardous Drug Compounding Pharmacies
- Lobbies
- Operation Theaters
- Sterile Compounding Pharmacies
- Treatment / Procedure Rooms
- Waiting Areas

PERFORMANCE

Mass: 6.7 kg/m²

Acoustic rating : NRC 0.65 and α_w 0.70

Insulation : Glass wool 50mm thick 24kg/m³ or Rockwool 50mm thick 40kg/m³ both faced with back fleece

Light reflectance : 0.85

Fire rated: Class A

Finish: White, seamless, spray-applied fine texture with low VOC - emitting material

To ensure the performance of this system meets the USG Boral Warranty requirements, only USG Boral products are to be used and installed correctly in accordance to USG Boral specification and recommendations.

ARCHITECTURAL SPECIFICATION

USG Boral Ensemble™ Monolithic Acoustical Ceiling System consist of USG Boral Ensemble™ Brand Panels 12.5mm thick screw fixed staggered onto USG Boral Dry Wall ceiling system (Primary Channel @ 900mm centers max., Furring Channel @ 600mm centers. max., Suspension Bracket to connect rod and Primary Channel, 50mm thick 24kg/m³ glass wool or 50mm thick 40kg/m³ Rockwool insulation with back fleece placed on top of panels, board joints to be flush finished using USG Boral Paper Tape 50mm width and SHEETROCK® All Purpose Joint Compound or USG Boral Premium Premix (1st and 2nd coat) and SHEETROCK® Lightweight All-Purpose Joint Compound (3rd coat) jointing compound.

All board surface to be final finished with 2 - 3mm thick **USG Boral Ensemble Spray Applied Finish**, all fixed in accordance to manufacturer's instruction and recommendation.



HCC2

METAL CEILING CLIP IN

STANDARD SPECIFICATION

RAL Colors



Wooden Finish



CLIP-IN CEILINGS SYSTEM

Features & Benefits:

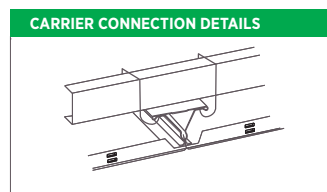
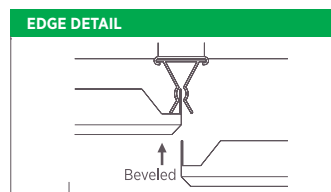
- USG Boral ME offers a wide range of high quality metal panels that increase the aesthetic and functional value of your hospital interiors within relatively a modest ceiling budget.
- Clip-in Metal ceiling panels are all antibacterial tiles which are press formed from aluminum alloy series 3000 or mild steel in various RAL Colors or wooden textures
- Powder coating application having a coating thickness between 70-90 microns.
- Panel thickness ranges from 0.6 up to 1.4mm, other thickness is available upon request.
- Suspension components are made of galvanized steel or and prepainted steel/ Aluminum.

Applications as per 2018 FGI Guidelines:

- Central Sterile Supply
- Class 2 MRI & Imaging Rooms
- Class 3 MRI & Imaging Rooms
- Clean Corridors
- Corridors
- Decontamination Rooms
- Endoscope Processing Rooms
- Food Preparation
- Food Storage
- Hazardous Drug Compounding Pharmacies
- Laundry Areas
- Operation Theaters
- Pharmacies
- Sterile Compounding Pharmacies
- Ware Washing

TABLE 9: METAL CEILING CLIP IN SUSPENSION COMPONENTS

DESCRIPTION & MATERIAL	APPLICATION	
Suspension hanger	Suspends primary channel from soffit	
Suspension channel	Provides primary support and lateral restraint	
Spring tee bar (Triangle type)	Suspended profiles carry and hold adjacent clip-in tiles flanges	
Wire connecting clips	For fastening the Spring T into the primary channel	
Primary channel brackets	To suspend the primary channels using hangers	
Butterfly clip	Provide easy plenum height adjustment	
L-Trim	22 x 19.5mm - 0.48 thick	
U-Trim	30 x 50 x 30mm - 0.48 thick	



CUT VIEW DETAILS



see next page also

Back to Floorplan3

PRODUCT INFORMATION

ITEM NO.	DESCRIPTION	TOTAL THICKNESS	EDGE DETAIL	COLOR	SUSPENSION OPTION
AC-11 (6)(7)(8) R (16)(10)(06)	Clip-in panel 300x300mm Alum, Plain	0.60/0.70/0.80mm	Beveled	RAL9016/ 9010/9006	Carrier Connection
AC-22 (6)(7)(8) R (16)(10)(06)	Clip-in panel 600x600mm Alum, Plain	0.60/0.70/0.80mm	Beveled	RAL9016/ 9010/9006	Carrier Connection
SC-22 (6)(7) R (16)(10)(06)	Clip-in panel 600x600mm Steel, Plain	0.50/0.60mm	Beveled	RAL9016/ 9010/9006	Carrier Connection
AC-14 (8)(9)(10) R (16)(10)(06)	Clip-in panel 300x1200mm Alum, Plain	0.80/0.90/1.0mm	Beveled	RAL9016/ 9010/9006	Carrier Connection
AC-15 (8)(9)(10) R (16)(10)(06)	Clip-in panel 300x1500mm Alum, Plain	0.80/0.90/1.0mm	Beveled	RAL9016/ 9010/9006	Carrier Connection
AC-24 (8)(9)(10) R (16)(10)(06)	Clip-in panel 600x1200mm Alum, Plain	0.80/0.90/1.0mm	Beveled	RAL9016/ 9010/9006	Carrier Connection
AC-44 (14) R (16)(10)(06)	Clip-in panel 1200x1200mm Alum, Plain	1.4mm	Beveled	RAL9016/ 9010/9006	Carrier Connection



HCC3

METAL TORSION SPRING CEILING SYSTEM

STANDARD SPECIFICATION

Features & Benefits:

- Aluminum panels provide a monolithic appearance.
- Full 90-degree swing-down motion provides easy downward access to plenum areas.
- Spring clip design provides superior panel alignment.
- No reveal edges as its optimum solution for Operation room ceilings.
- Wind load tested and approved, including Miami-Dade NOA, for exterior applications with proper bracing and framing.

Applications as per 2018 FGI Guidelines:

- Central Sterile Supply
- Class 2 MRI & Imaging Rooms
- Class 3 MRI & Imaging Rooms
- Clean Corridors
- Corridors
- Decontamination Rooms
- Endoscope Processing Rooms
- Food Preparation
- Food Storage
- Hazardous Drug Compounding Pharmacies
- Laundry Areas
- Operation Theaters
- Operation Theaters
- Sterile Compounding Pharmacies
- Treatment / Procedure Rooms
- Ware Washing



see next page also

[Back to Floorplan1](#)

[Back to Floorplan2](#)

**PRODUCT SPECIFICATION
DETAILS | ACOUSTICAL
CEILINGS | 09 51 33**

Panel Size (mm)	Panel Size (mm)	600x600	600x1200	600x1800	600x2400	1200x1200
Material thickness (mm)	Material thickness METRIC	0.8	0.8	1.0	1.0	1.0

General

Provide Acoustical Ceiling Material manufactured to meet requirements of this specification in accordance with ASTM E 1264

Materials

- Type: VII, aluminum facing (pan) with mineral glass or fiber base backing.
- Pattern: Plain
- Panel Face Finish: Standard colors is RAL 9010 and many other wooden patterns are Beech, Cherry, Maple, Walnut, Alder, Oak, Mahogany and Polaris, others are available upon request
- LR: It will vary depending on paint color
- NRC: It will vary depending on acoustical backer
- CAC: It will vary depending on acoustical backer
- Edge/Joint Detail: Butt Joint.
- Suspension Grid Width 24mm
- Panel Height : 38mm
- Modular Size: 600x600mm , 600x1200mm, 600x1800mm, 600x2400mm, 1200x1200mm
- Required accessories: Stabilizer bars for all panels longer than 1524mm
- Product Name: METAL TORSION SPRING CEILING SYSTEM

DIRECT-HUNG, METAL SUSPENSION SYSTEM FOR TORSION SPRING METAL PAN CEILING.

Wide-Face, Capped, Double-Web, Steel Suspension System: Main runners and Cross runners roll formed from cold-rolled steel sheet, prepainted, electrolytic zinc-coated or hot-dip galvanized according to ASTM A 653/A 653M, G30 (Z90) coating designation, with prefinished, cold-rolled, 24mm wide sheet metal caps on flanges.

SUSPENSION SYSTEM

A. DX MAIN TEE

- a. Structural Classification: Heavy-duty system.
- b. End Condition of Main Runners: Snap Clip.
- c. Face Design: Flat, flush.
- d. Cap Material: Steel cold-rolled sheet.
- e. Cap Finish: White.
- f. Grid Length: 3600mm

B. DX LONG CROSS TEE

- a. End Condition of Cross Runners: Snap Clip.
- b. Face Design: Flat, flush.
- c. Cap Material: Steel cold-rolled sheet.
- d. Cap Finish: White
- e. Grid Length: 1200mm

C. SHORT CROSS TEE

- a. End Condition of Cross Runners: Snap Clip.
- b. Face Design: Flat, flush with factory-cut slots fabricated to accept torsion-spring-hinged attachment.
- c. Cap Material: Steel cold-rolled sheet.
- d. Cap Finish: White
- e. Grid Length: 600mm

HCC4

CLEAN ROOM™ NON-PERFORATED

STANDARD SPECIFICATION





Features & Benefits:

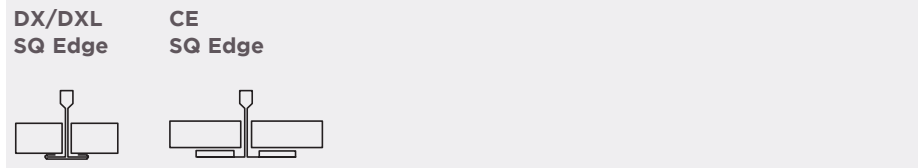
- Have an embossed, vinyl-laminated face with sealed back and edges for use in Class 100 (cross reference to Class 5 per ISO 14644-1) or 10M-100M clean rooms as per Federal standard 209E for Classification by Airborne particles
- Made with Fire code base materials to meet life safety codes
- Available in non-perforated finish for healthcare applications
- Classified HRC panels (High Recycled Content) which is greater than 50%
- Recommended to be used with CE grid (gasketed tee flanges) for Hospitals Laboratories and Hospitals General Areas
- Certified USDA bio based product requirements for food processing areas where Clean Room™ has achieved both Bio-Preferred initiatives: Federal Procurement Preference and Certified Product Labeling
- Cleanroom classified, meets Federal Spec. 209E for non-perforated “Clean Room™ and work station Requirements, controlled environment”
- Washable, scrubbable resistance
- High humidity resistant and anti-mold, mildew growth

Applications as per 2018 FGI Guidelines:

- Class 1 MRI & Imaging Rooms
- Food Preparation
- Food Storage
- Hydro-therapy Rooms
- Laboratories
- Laundry Areas
- Pharmacies
- Ware Washing



Item	Size	Edge Detail	NRC	CAC	LR	Recycled Content	VOC Emission	Cost
 CLX625	600x1200x15	SQ	0.15	37	80%	52%	N/A	\$\$\$\$
CLX245	610x1220x15							
 CLX665	600*600*15	SQ	0.15	37	80%	52%	N/A	\$\$\$\$
CLX225	610*610*15							



PART 2- PRODUCT

Product Specification Details | Acoustical Ceilings | 09 51 13

2.1 General

Provide Acoustical Ceiling Material manufactured to meet requirements of this specification in accordance with ASTM E 1264 and EN 13964.

2.2 Materials

Acoustical Ceiling Units:

1. Type X, Pattern [G] [I]
2. Embossed Vinyl-faced with field cut-edges sealed with white latex paint
3. Size 15mm thick [600 x 600] [600 x 1200]
4. Edge Detail Trim (Square)
5. Noise Reduction Coefficient (NRC) [0.15]
6. Ceiling Attenuation Class (CAC) [37 dB]
7. Light Reflectance Coefficient (LR) 0.8
8. Recycled Content [52%]
9. Color White similar to RAL 9016
10. Surface Burning Characteristics per ASTM E 84 Class A, Flame Spread: 10, Smoke development: 20 Reaction to Fire: Euroclass A2-s1,d0 in accordance with EN-13501-1
11. Underwriters Laboratories Inc. Fire-Resistance (ASTM E 119) ANSI/UL 263 Time-Rated Assembly [3hrs] [D218]
12. Clean Room Classification; ISO 5 as per ISO 14644-1
13. Thermal Resistance: 0.23 m °K/W - R 1.3
14. Humidity Resistance Maximum 99% RH / 40°C
15. Weight: 5.25 kg/m²
16. Mold Prevention: Inherent to Mold/Mildew growth
17. Relevant LEED Credit: EA Credit 1 | MR Credit 4 | MR Credit 5 | MR Credit 6 | IEQ Credit 3 | IEQ Credit 3.2 | IEQ Credit 4.6 | IEQ Credit 8.1 | IEQ Credit 9
18. Product Name [Clean Room™]

HCC5

STANDARD SPECIFICATION



LOUNA SOUND ABSORPTION

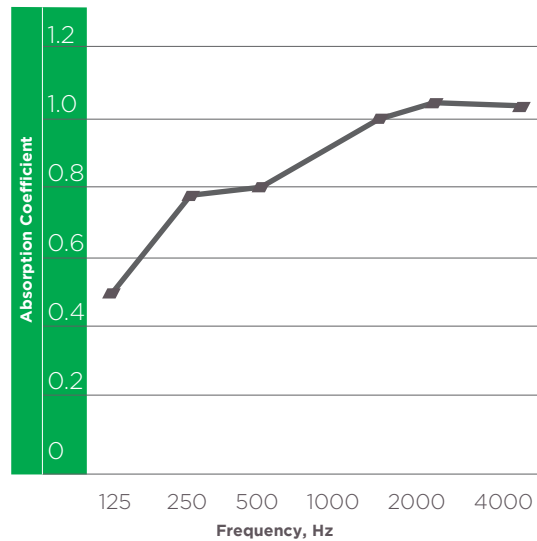
LOUNA™

Features & Benefits:

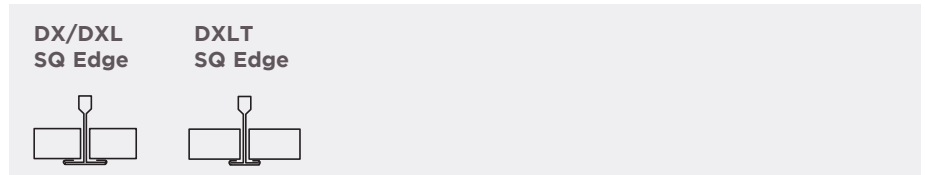
- Soft Fiber substrate with monolithic visual reducing installation time
- Exceptional Sound Absorption with NRC values up to 0.95
- High Light Reflectance (LR-0.88) reduces light fixtures & Energy use
- Washable & Scrubbable finish
- Impact & Scratch Resistant
- Available in Plank Sizes compatible with Logix Integrated Ceiling System

Applications as per 2018 FGI Guidelines:

- Lobbies
- Waiting Areas



	Item	Size	Edge Detail	NRC	CAC	LR	Recycled Content	VOC Emission	Cost
☂	LC665	600*600*15	SQ	0.85	24	88%	40%	N/A	\$\$\$
	LC225	610*610*15							
☂	LC669	600*600*19	SQ	0.95	24	88%	40%	N/A	\$\$\$\$
	LC229	610*610*19							
☂	LC629	600*1200*19	SQ	0.95	24	88%	40%	N/A	\$\$\$\$
	LC249	610*1220*19							
☂	LC6625	600*600*25	SQ	0.95	28	88%	40%	N/A	\$\$\$\$
	LC2225	610*610*25							



PART 2- PRODUCT

Product Specification Details | Acoustical Ceilings | 09 51 13

2.1 General

Provide Acoustical Ceiling Material manufactured to meet requirements of this specification in accordance with ASTM E 1264.

2.2 Materials

Acoustical Ceiling Units:

1. Type XII, Pattern [G]
2. Glass wool substrate finished with Fiber Glass scrim
3. Size 15, 19, 25mm thick [600 x 600] [600 x 1200]
4. Edge Detail Trim (Square)
5. Noise Reduction Coefficient (NRC) [0.85] [0.95]
6. Ceiling Attenuation Class (CAC) [24-28 dB]
7. Light Reflectance Coefficient (LR) 0.88
8. Recycled Content [40%]
9. Color White similar to RAL 9016
10. Surface Burning Characteristics per ASTM E84 Class A, Flame Spread:25, Smoke development
11. Thermal Resistance: 0.6 m °K/W - R 3.5 (19mm), 0.74 m °K/W - R 4.2 (25mm)
12. Humidity Resistance Maximum 99% RH / 40°C
13. Weight: 1.7 kg/m for 15mm, 2.1 kg/m for 19mm, 2.4 kg/m for 25mm
14. Mold Prevention: Soft Fiber substrate is inherently resistant to the growth of mold and mildew
15. Washability / Scrubbability: Exceeds 1000 Wash/Scrub Cycles without surface break or the extent of abrasion per ASTM D4828 & D2486
16. Relevant LEED Credit: EA Credit 1 | MR Credit 4 | MR Credit 5 | MR Credit 6 | IEQ Credit 3 | IEQ Credit 3.2 | IEQ Credit 4.6 | IEQ Credit 8.1 | IEQ Credit 9
17. Product Name [Louna]

HCC6

STANDARD SPECIFICATION



HALCYON™ HEALTHCARE

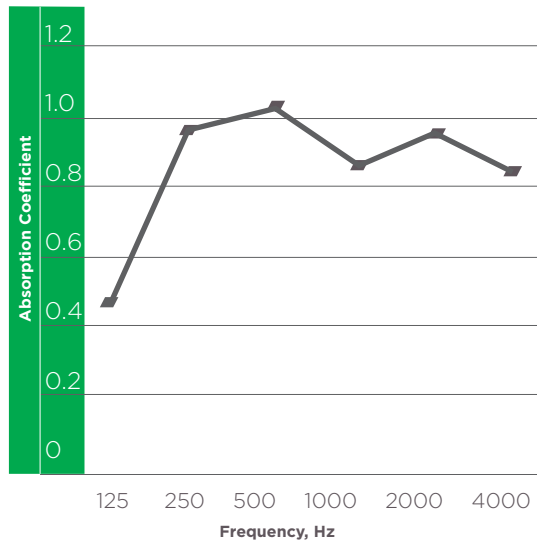
Features & Benefits:

- Water repellent membrane designed to be durable and safe with common disinfectants
- Fiber Glass substrate with monolithic visual reducing installation time
- Recommended to be used with AX grid for hospitals high-humidity or wet-cleaned areas
- Exceptional Sound Absorption with NRC values up to 1
- High Light Reflectance (LR-0.88) reduces light fixtures & Energy use
- Washable & Scrubbable finish
- Impact & Scratch Resistant
- Available in Plank Sizes compatible with Logix Integrated Ceiling System

Applications as per 2018 FGI Guidelines:

- Class 1 MRI & Imaging Rooms
- Food Preparation
- Food Storage
- Laboratories
- Laundry Areas
- Lobbies
- ICU / NICU
- Pharmacies
- Waiting Areas
- Ware Washing

HALCYON™ HEALTHCARE SOUND ABSORPTION - 19 MM











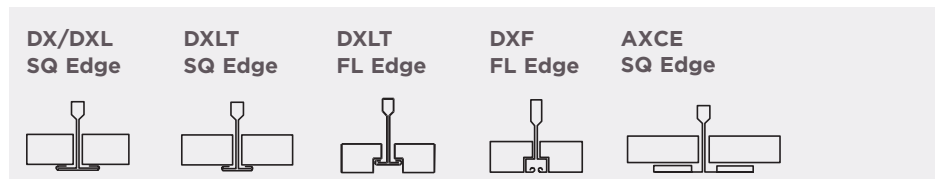
see next page also

[Back to Floorplan1](#)

[Back to Floorplan2](#)

[Back to Floorplan3](#)

	Item	Size	Edge Detail	NRC	CAC	LR	Recycled Content	VOC Emission	Cost
	HC669-HC HC229-HC	600*600*19 610*610*19	SQ	0.95	24	88%	40%	N/A	\$\$\$\$
	HC629-HC HC249-HC	600*1200*19 610*1220*19	SQ	0.95	24	88%	40%	N/A	\$\$\$\$
	HC6625-HC HC2225-HC	600*600*25 610*610*25	SQ	1	25	88%	40%	N/A	\$\$\$\$
	HC6225-HC HC2425-HC	600*1200*25 610*1220*25	SQ	1	25	88%	40%	N/A	\$\$\$\$
	HCRF6625-HC HCRF2225-HC	600*600*25 610*610*25	FL	0.95	28	88%	40%	N/A	\$\$\$\$
	HCRF6225-HC HCRF2425-HC	600*1200*25 610*1220*25	FL	0.95	28	88%	40%	N/A	\$\$\$\$
	HC6638-HC HC2238-HC	600*600*38 610*610*38	SQ	1	31	88%	43%	N/A	\$\$\$\$
	HC6238-HC HC2238-HC	600*1220*38 610*1220*38	SQ	1	31	88%	43%	N/A	\$\$\$\$



PART 2- PRODUCT

Product Specification Details | Acoustical Ceilings | 09 51 13

2.1 General

Provide Acoustical Ceiling Material manufactured to meet requirements of this specification in accordance with ASTM E 1264.

2.2 Materials

Acoustical Ceiling Units:

1. Type XII, Form 2, Pattern [E] [G]
2. Fiber Glass Substrate finished with Painted Fiber Glass scrim
3. Size 19, 25, 38mm thick [600 x 600] [600 x 1200]
4. Edge Detail Trim (Square), Reveal (SL)(FL)
5. Noise Reduction Coefficient (NRC) [0.95][1]
6. Ceiling Attenuation Class (CAC) [24-31 dB]
7. Light Reflectance Coefficient (LR) 0.88
8. Recycled Content up to [43%]
9. Color White similar to RAL 9016
10. Surface Burning Characteristics per ASTM E84 Class A, Flame Spread:25, Smoke development: 15
11. Thermal Resistance: 0.6 m² °K/W - R 3.5 (19mm), 0.74 m² °K/W - R 4.2 (25mm) 1.12 m² °K/W (38mm)
12. Humidity Resistance Maximum 99% RH / 40°C, ClimaPlus
13. Weight 2.1 kg/m² for 19mm, 2.4 kg/m² for 25mm, 3.6 kg/m² for 38mm
14. Mold Prevention: Fiberglass substrate is inherently resistant to the growth of mold and mildew
15. Washability / Scrubbability: Exceeds 1000 Wash/Scrub Cycles without surface break or the extent of abrasion per ASTM D4828 & D2486
16. Water repellent application on Top surface up to 5 Hours
17. Relevant LEED Credit: EA Credit 1 | MR Credit 4| MR Credit 5 | MR Credit 6
IEQ Credit 3 | IEQ Credit 3.2 | IEQ Credit 4.6 | IEQ Credit 8.1 | IEQ Credit 9
18. Product Name [Halcyon™ HealthCare]

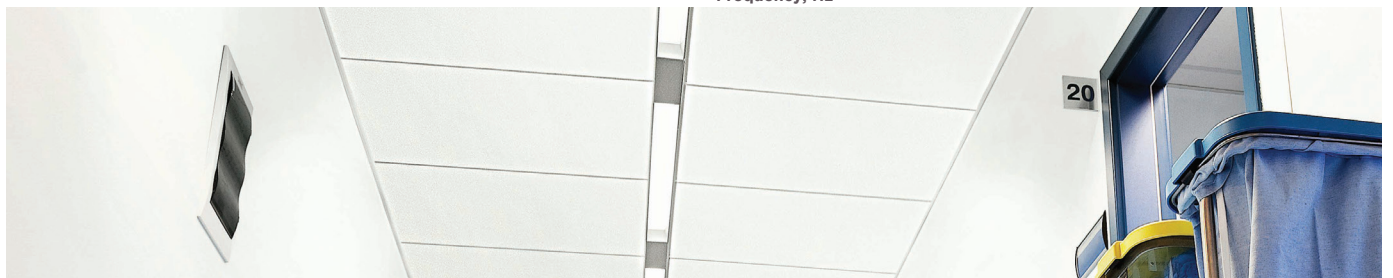
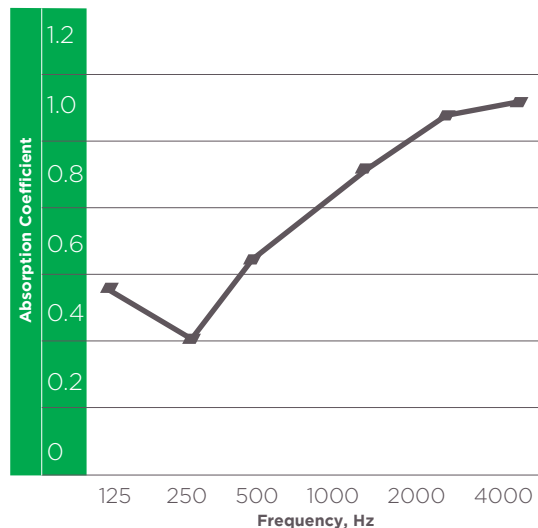
HCC7

SONATA
HEALTHCARESTANDARD
SPECIFICATION**Features & Benefits:**

- Sonata healthcare in normal condition face and back is ISO 4 according to the norm ISO 14644-1 : 2015
- Vibrations face and back is ISO 4 according to the norm ISO 14644-1 : 2015
- The microbiological class according to the norm NF S 90-351 : 2013 is as following: M100 / area 2 (Acinobacter baumannii), M1 / area 4 (Staphylococcus aureus MRSA, Bacillus cereus, Streptococcus pneumoniae, Escherichia coli, Candida albicans), <1 / area 2,3,4 (Aspergillus brasiliensis)
- Recommended to be used with AXCE grid (gasketed tee flanges) for hospitals restricted and semi restricted areas
- Fine, monolithic texture Industry's highest light reflectance LR 0.89 reduces light fixtures and energy use is part of Indirect lighting
- Water repellent membrane on both top and back surfaces
- High Impact and scratch resistance, durable and cleanable surface
- Available in High NRC formulation and in optimized recycled content formulations to help maximize LEED recycled content contribution
- Washable and scrubbable finish



















Applications as per 2018 FGI Guidelines:

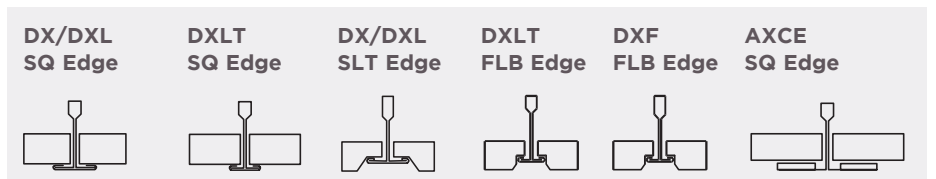
- Central Sterile Supply
- Class 1 MRI & Imaging Rooms
- Class 2 MRI & Imaging Rooms
- Clean Corridors
- Corridors
- Decontamination Rooms
- Endoscope Processing Rooms
- Food Preparation
- Food Storage
- Laboratories
- Laundry Areas
- Nurse's Stations
- Patient Rooms
- Pharmacies
- Treatment / Procedure Rooms
- Ware Washing

SONATA HEALTHCARE
SOUND ABSORPTION -
19 MM

see next page also

[Back to Floorplan1](#)[Back to Floorplan3](#)

	Item	Size	Edge Detail	NRC	CAC	LR	Recycled Content	VOC Emission	Cost
 	SC669HC SC229HC	600*600*19 610*610*19	SQ	0.75	37	89%	83%	Low	\$\$\$\$
 	SCR669HC SCR229HC	600*600*19 610*610*19	SLT	0.75	37	89%	83%	Low	\$\$\$\$
 	SCRF669HC SCRF229HC	600*600*19 610*610*19	FLB	0.75	37	89%	83%	Low	\$\$\$\$
 	SC629HC SC249HC	600*1200*19 610*1220*19	SQ	0.75	37	89%	83%	Low	\$\$\$\$
 	SCR629HC SCR249HC	600*1200*19 610*1220*19	SLT	0.75	37	89%	83%	Low	\$\$\$\$
 	SCRF629HC SCRF249HC	600*1200*19 610*1220*19	FLB	0.75	37	89%	83%	Low	\$\$\$\$
 	SC6622HC SC2222HC	600X600X22 610X610X22	SQ	0.8	40	89%	83%	Low	\$\$\$\$
 	SCR6622CH SCR2222HC	600X600X22 610X610X22	SLT	0.8	40	89%	83%	Low	\$\$\$\$
 	SCRF6622HC SCRF2222HC	600X600X22 610X610X22	FLB	0.8	40	89%	83%	Low	\$\$\$\$



PART 2- PRODUCT

Product Specification Details | Acoustical Ceilings | 09 51 13

2.1 General

Provide Acoustical Ceiling Material manufactured to meet requirements of this specification in accordance with ASTM E 1264 and EN 13964.

2.2 Materials

Acoustical Ceiling Units:

1. Type IV, Form 2, Pattern [E] [G]
2. Mineral Fiber Substrate manufactured in wet Felted Technology and finished with Painted Fiber Glass scrim
3. Size 19, 22mm thick [600 x 600] [600 x 1200] [300 x 1200] [300 x 1500]
4. Edge Detail Trim (Square), Reveal (SLT) (FLB)
5. Noise Reduction Coefficient (NRC) [0.75] [0.8]
6. Ceiling Attenuation Class (CAC) [37-40 dB]
7. Light Reflectance Coefficient (LR) 0.89
8. Recycled Content [up to 83%]
9. Color White similar to RAL 9016
10. Surface Burning Characteristics per ASTM E84 Class A, Flame Spread:20, Smoke development:70 Reaction to Fire: Euroclass A2-s1,d0 in accordance with EN-13501-1
11. Underwriters Laboratories Inc Fire Resistance ASTM E119 ANSI/UL 263 Time-Rated Assembly (2Hrs) (J201)
12. Clean Room Classification; ISO 4 as per ISO 14644-1
13. Thermal Resistance: 0.31 m °K/W - R 1.8 (19mm)
14. Humidity Resistance Maximum 99% RH / 40°C
15. Weight: 5 kg/m
16. Mold Prevention application per ASTM D3273-1, Rate 10 per D3274
17. Washability / Scrubbability: Exceeds 1000 Wash/Scrub Cycles without surface break or the extent of abrasion per ASTM D4828 & D2486
18. Water repellent membrane on Top & Back surface up to 5 Hours
19. Relevant LEED Credit: EA Credit 1 | MR Credit 4 | MR Credit 5 | MR Credit 6 | IEQ Credit 3 | IEQ Credit 3.2 | IEQ Credit 4.6 | IEQ Credit 8.1 | IEQ Credit 9
20. Product Name [Sonata HealthCare]

HCC8

SPARTA

STANDARD
SPECIFICATION

Plain White



Star Plus

**Features & Benefits:**

- Laminated Washable Vinyl facing for easy maintenance
- Available only in Plain facings with smooth appearance for Plain White pattern and light texture for Star Plus pattern
- Ultra high humidity resistant and sag resistance ensures durability in standard or extreme environmental conditions. May be installed early in the hospital program
- It comes with Aluminum Foil backing which acts as a vapor barrier and resists breathing so panel stays cleaner longer
- Scrub resistant. Dirt marks are easy to remove
- Scuff and scratch resistant, for longer life
- Very suitable for Healthcare applications
- Economical and easy to trim and install

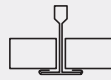
Applications as per 2018 FGI Guidelines:

- Hydro-therapy Rooms
- Nurse's Stations
- Patient Rooms



	Item	Size	Edge Detail	NRC	CAC	LR	Recycled Content	VOC Emission	Cost
☂	LSP665	600*600*15	SQ	0.15	35	84%	32%	Low	\$
	LSP225	610*610*15							
☂	LPW665	600*600*15	SQ	0.15	35	84%	32%	Low	\$
	LPW225	610*610*15							
☂	LSP669	600*600*19	SQ	0.15	36	84%	32%	Low	\$\$
	LSP229	610*610*19							
☂	LPW669	600*600*19	SQ	0.15	36	84%	32%	Low	\$\$
	LPW229	610*610*19							

DX/DXL
SQ Edge



DXLT
SQ Edge



PART 2- PRODUCT

Product Specification Details | Acoustical Ceilings | 09 51 13

2.1 General

Provide Acoustical Ceiling Material manufactured to meet requirements of this specification in accordance with ASTM E 1264.

2.2 Materials

Acoustical Ceiling Units:

1. Type X, Pattern [G]
2. Smooth and textured laminated panels
3. Size 15, 19mm thick [600 x 600]
4. Edge Detail Trim (Square)
5. Noise Reduction Coefficient (NRC) [0.15]
6. Ceiling Attenuation Class (CAC) [35-36 dB]
7. Light Reflectance Coefficient (LR) 0.84
8. Recycled Content [32%]
9. Color White similar to RAL 9016
10. Thermal Resistance: 0.23 m² °K/W - R 1.3 (15mm), 0.31 m² °K/W - R 1.8 (19mm)
11. Clean Room Classification; ISO 5 as per ISO 14644-1
12. Humidity Resistance Maximum 99% RH / 40°C
13. Weight: 3.5 kg/m² 15mm, 4.5 kg/m² 19mm
14. Mold Prevention: Inherent to Mold/Mildew growth
15. Relevant LEED Credit: EA Credit 1 | MR Credit 4 | MR Credit 5 | MR Credit 6
IEQ Credit 3 | IEQ Credit 3.2 | IEQ Credit 4.6 | IEQ Credit 8.1 | IEQ Credit 9
16. Product Name [Sparta]

HCC9

TAIGA HYGIENE

STANDARD SPECIFICATION



Features & Benefits:

- Taiga Hygiene in normal condition face and back is ISO 4 according to the norm ISO 14644-1 : 2015
- Vibrations face and back is ISO 4 according to the norm ISO 14644-1 : 2015
- The microbiological class according to the norm NF S 90-351 : 2013 is as following: M100 / area 2 (Klebsiella pneumoniae), M1 / area 4 (Acinobacter baumannii, Staphylococcus aureus MRSA, Bacillus cereus, Streptococcus pneumoniae, Escherichia coli, Candida albicans), <1 / area 2,3,4 (Aspergillus brasiliensis)
- Taiga Hygiene has been developed to meet the most stringent demand on hygiene and clean ability
- All Taiga Hygiene items have a special fungicide treatment in the core and on the finished painted surface to enhance the resistance to growth of micro-organisms and ensure regular clean ability. It contains a broad spectrum antimicrobial additive on the face and the back of the panel that provides resistance against the growth of mold and mildew
- High light reflectance performance 86%
- High humidity resistant in ClimaPlus, suitable for applications with intermittent heating and Cooling

Applications as per 2018 FGI Guidelines:

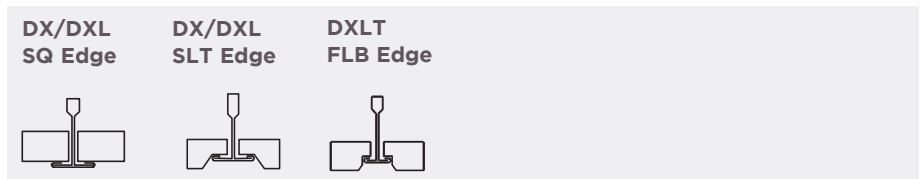
- Class 1 MRI & Imaging Rooms
- Laboratories
- Nurse's Stations
- Patient Rooms
- Pharmacies



see next page also

[Back to Floorplan1](#)

	Item	Size	Edge Detail	NRC	CAC	LR	Recycled Content	VOC Emission	Cost
☔	NA4107M-ME	600*600*15	SQ	0.15	33	86%	32%	Low	\$\$
	NA4107M-IM	610*610*15							
☔	NB4107M-ME	600*600*15	SLT	0.15	33	86%	32%	Low	\$\$
	NB4107M-IM	610*610*15							
☔	NC4107M-ME	600*600*19	FLB	0.15	36	86%	32%	Low	\$\$
	NC4107M-IM	610*610*19							
☔	NA4997M-ME	600*600*19	SQ	0.15	36	86%	32%	Low	\$\$\$
	NA4997M-IM	610*610*19							
☔	NB4997M-ME	600*600*19	SLT	0.15	36	86%	32%	Low	\$\$\$
	NB4997M-IM	610*610*19							



PART 2- PRODUCT

Product Specification Details | Acoustical Ceilings | 09 51 13

2.1 General

Provide Acoustical Ceiling Material manufactured to meet requirements of this specification in accordance with ASTM E 1264 and EN 13964.

2.2 Materials

Acoustical Ceiling Units:

1. Type III, Form 2, Pattern [G]
2. Plain finish panels
3. Size 15, 19mm thick [600 x 600]
4. Edge Detail Trim (Square), Reveal (SLT)
5. Noise Reduction Coefficient (NRC) [0.15]
6. Ceiling Attenuation Class (CAC) [33-36 dB]
7. Light Reflectance Coefficient (LR) 0.86
8. Recycled Content [32%]
9. Color White similar to RAL 9016
10. Surface Burning Characteristics per ASTM E 84 Class A, Flame Spread: 10, Smoke development: 20 Reaction to Fire: Euroclass A2-s1,d0 in accordance with EN-13501-1
11. Thermal Resistance: 0.23 m² °K/W - R 1.3 (15mm), 0.31 m² °K/W - R 1.8 (19mm)
12. Clean Room Classification; ISO 4 as per ISO 14644-1
13. Humidity Resistance Maximum 99% RH / 40°C for ClimaPlus
14. Weight: 3.5 kg/m² 15mm, 4.5 kg/m² 19mm
15. Mold Prevention application per ASTM D3273-1, Rate 10 per D3274
16. Washability / Scrubbability: Exceeds 1000 Wash/Scrub Cycles without surface break or the extent of abrasion per ASTM D4828 & D2486
17. Relevant LEED Credit: EA Credit 1 | MR Credit 4 | MR Credit 5 | MR Credit 6 | IEQ Credit 3 | IEQ Credit 3.2 | IEQ Credit 4.6 | IEQ Credit 8.1
18. Product Name [Taiga Hygiene]